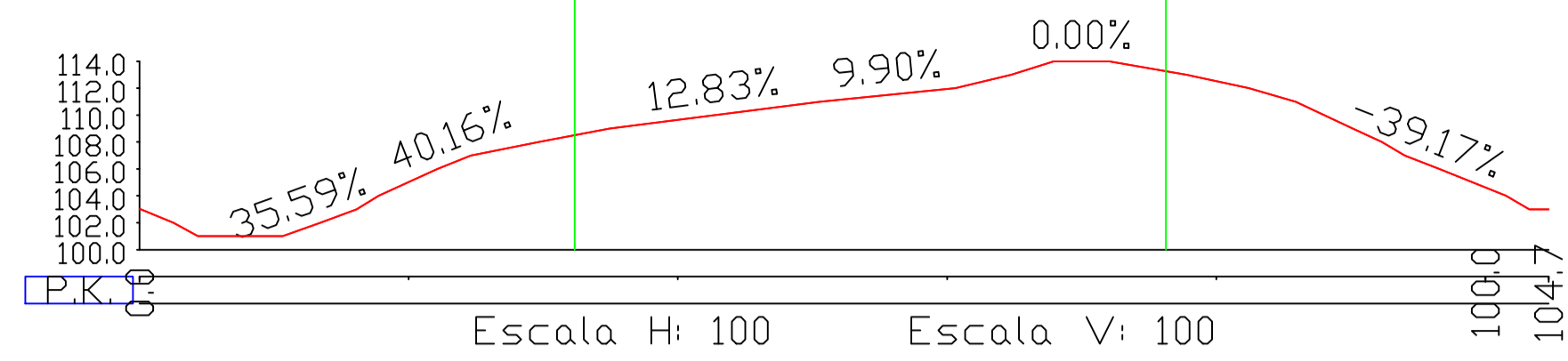
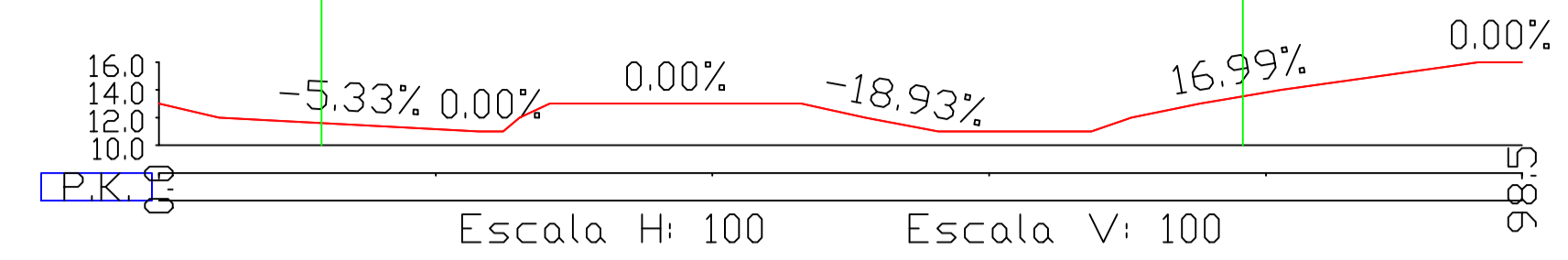


ELP- 3



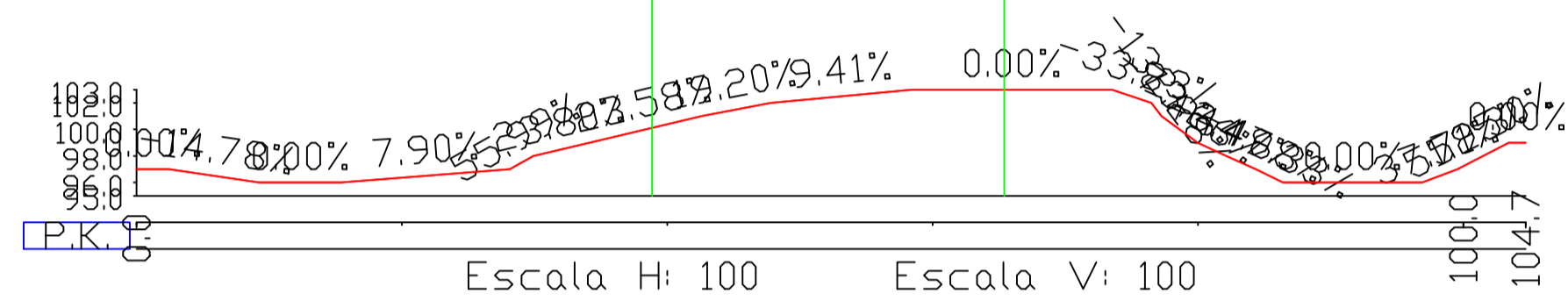
T1- ELP3

ELP-4



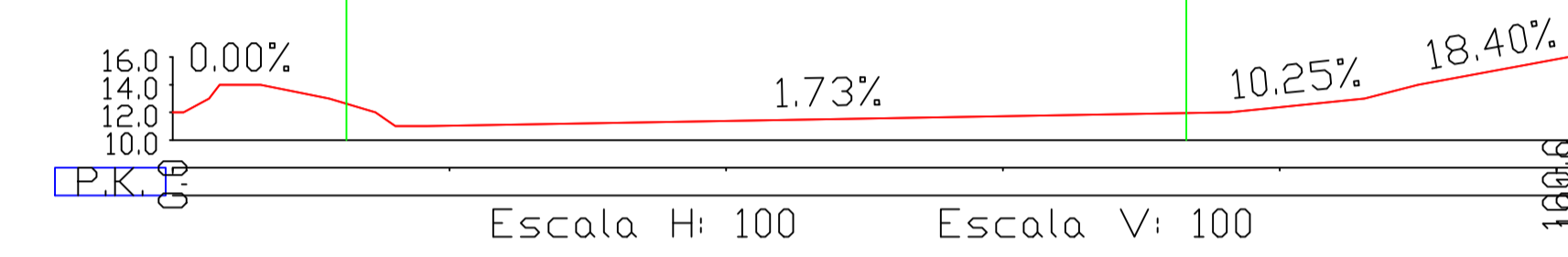
T1- ELP4

ELP- 3



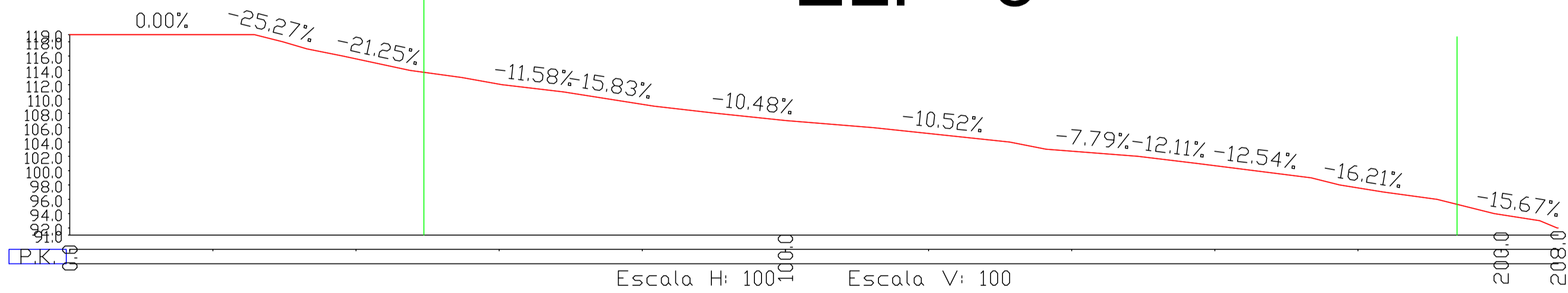
Q2 T2- ELP3

ELP-4



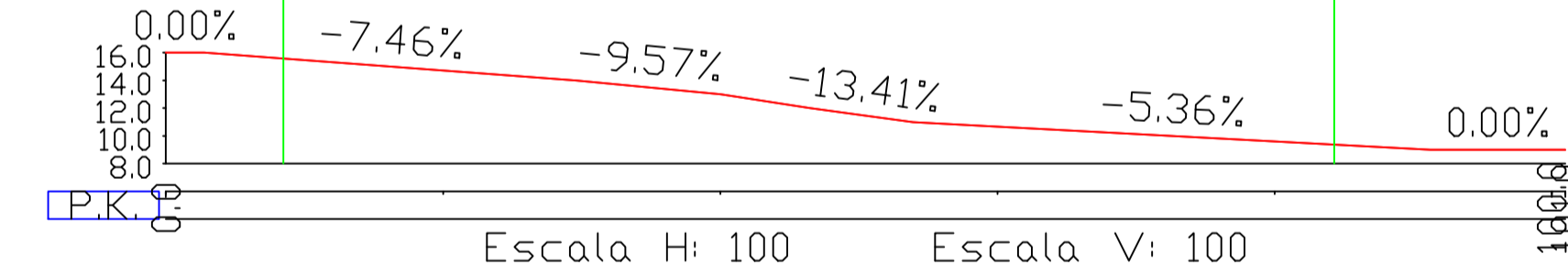
L1- ELP4

ELP- 3

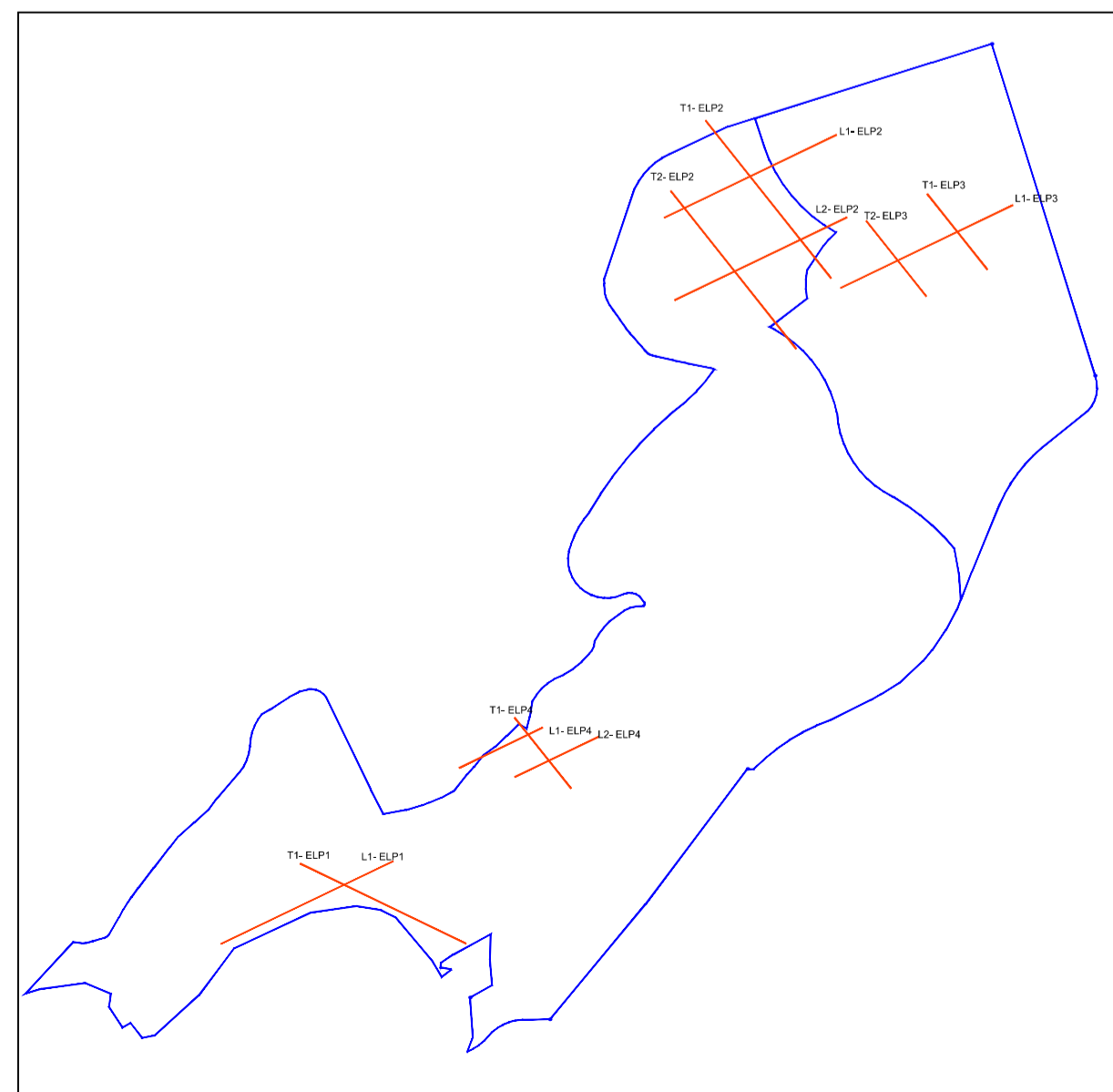
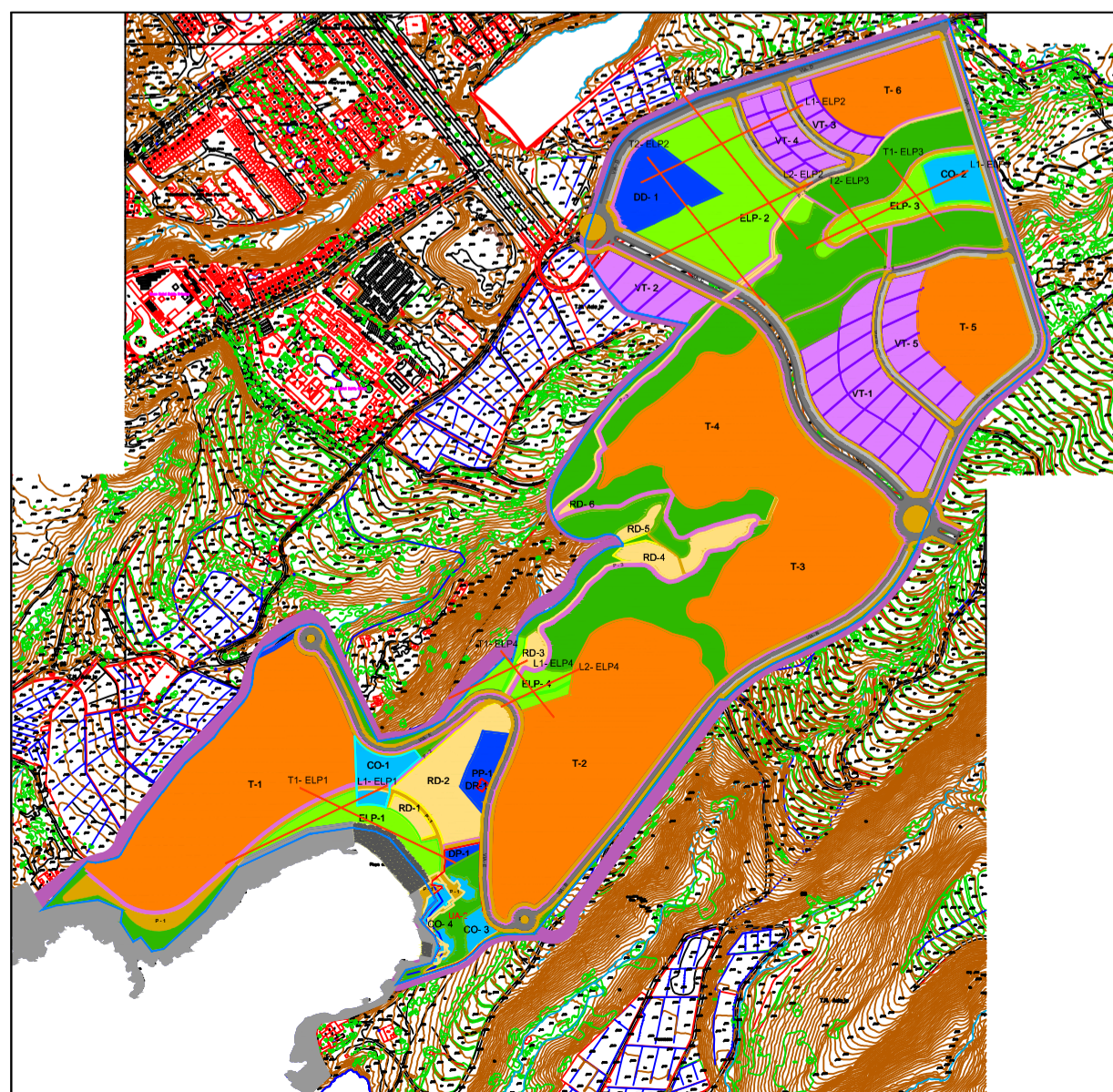


L1- ELP3

ELP-4



L2- ELP4



PLANO DE INFORMACIÓN: CLINOMETRICOS ESPACIOS LIBRES ZONAS ACCESIBLES (ELP-3 - ELP-4)		P-2.14
REVISION PARCIAL 02 DEL PLAN GENERAL DE ADEJE SECTOR SO.6 PUERTITO DE ADEJE		E-1:500
SITUACION:	ADEJE	BB-1
PROMOTOR:	AYUNTAMIENTO DE ADEJE	
OBSERVACIONES:		JULIO 2015
JAVIER ALVAREZ PEÑATE ARQUITECTO, COLEG.947	SILVIA de MIGUEL GARCIA ARQUITECTO, COLEG.1842	 ALVAREZ Y DE MIGUEL ARQUITECTOS <small>ALVAREZ Y de MIGUEL ARQUITECTOS - MIRAFLORES 90 - 38003 SANTA CRUZ DE TENERIFE - TLF: 922531421 - estudio@admarchitectos.com</small>