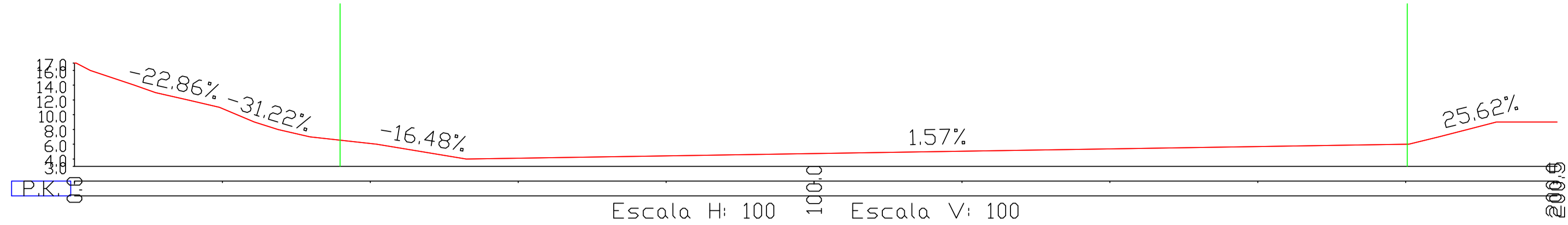
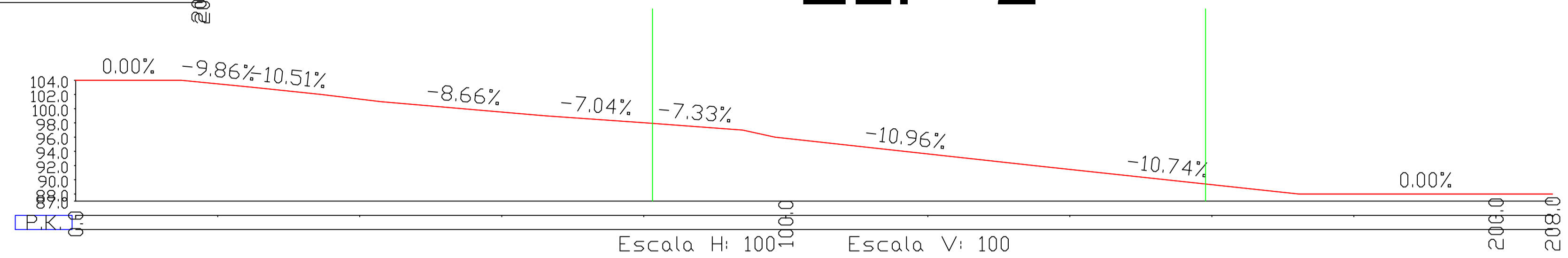


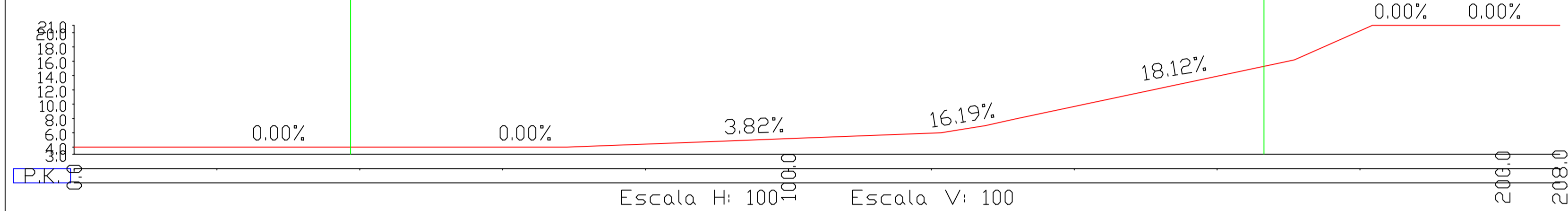
ELP-1



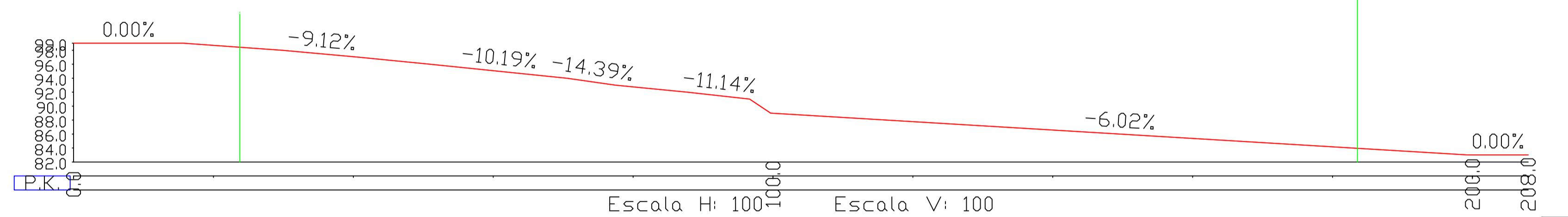
ELP-2



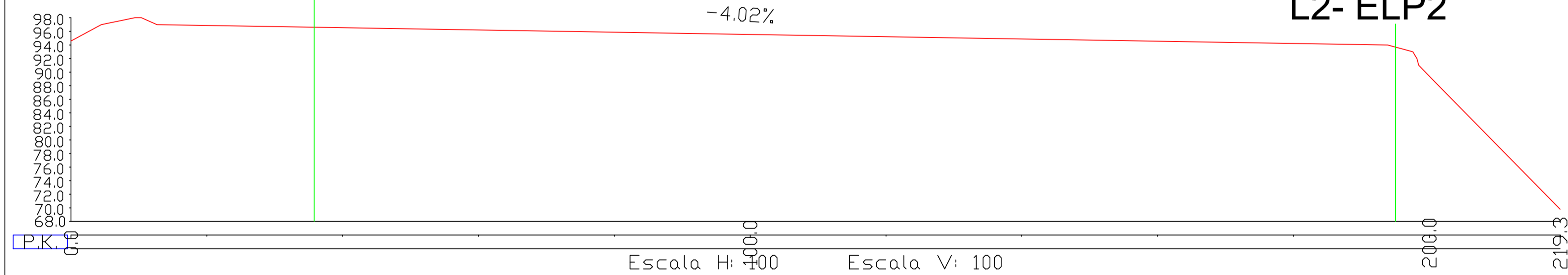
ELP-1



ELP-2



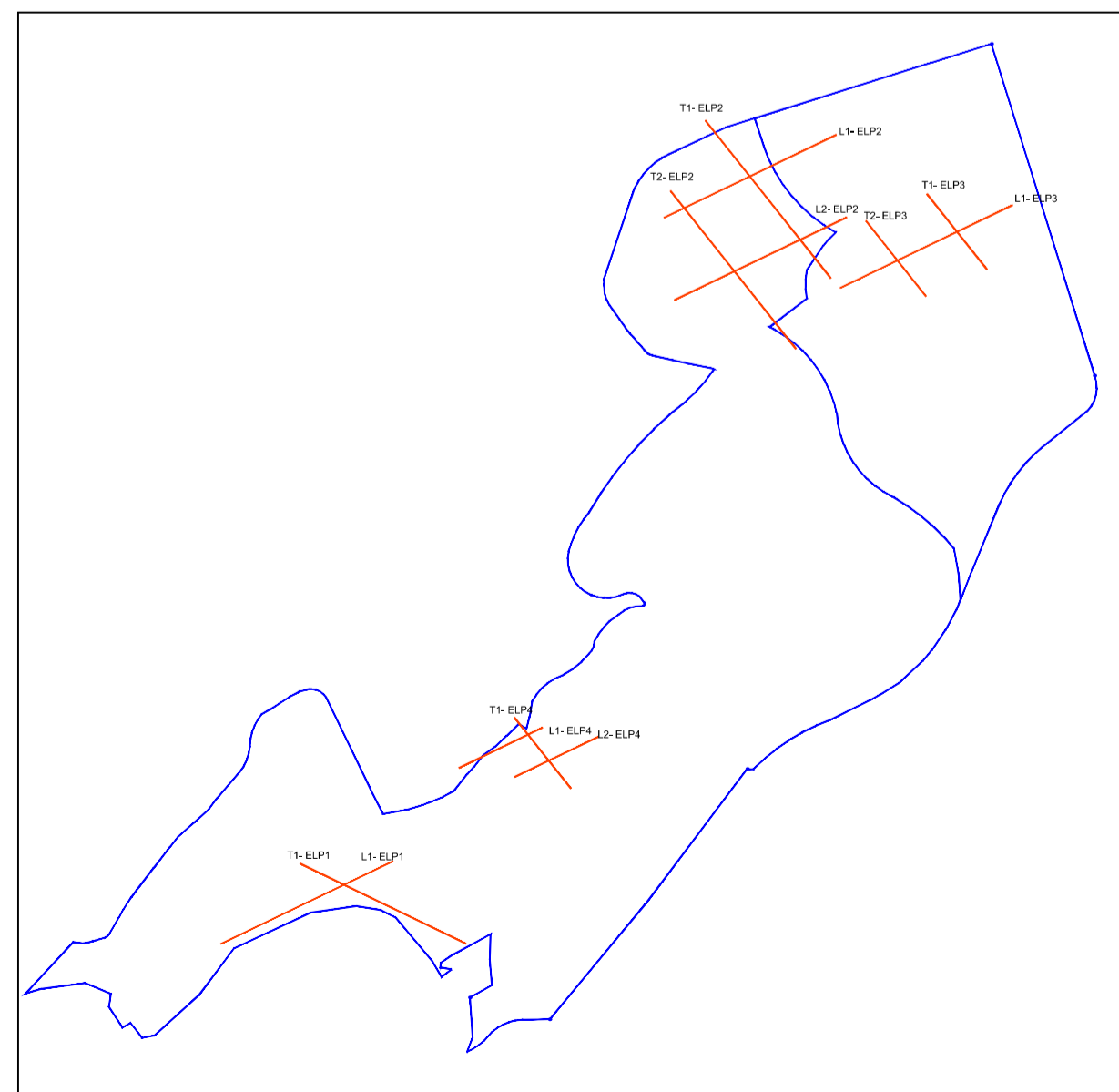
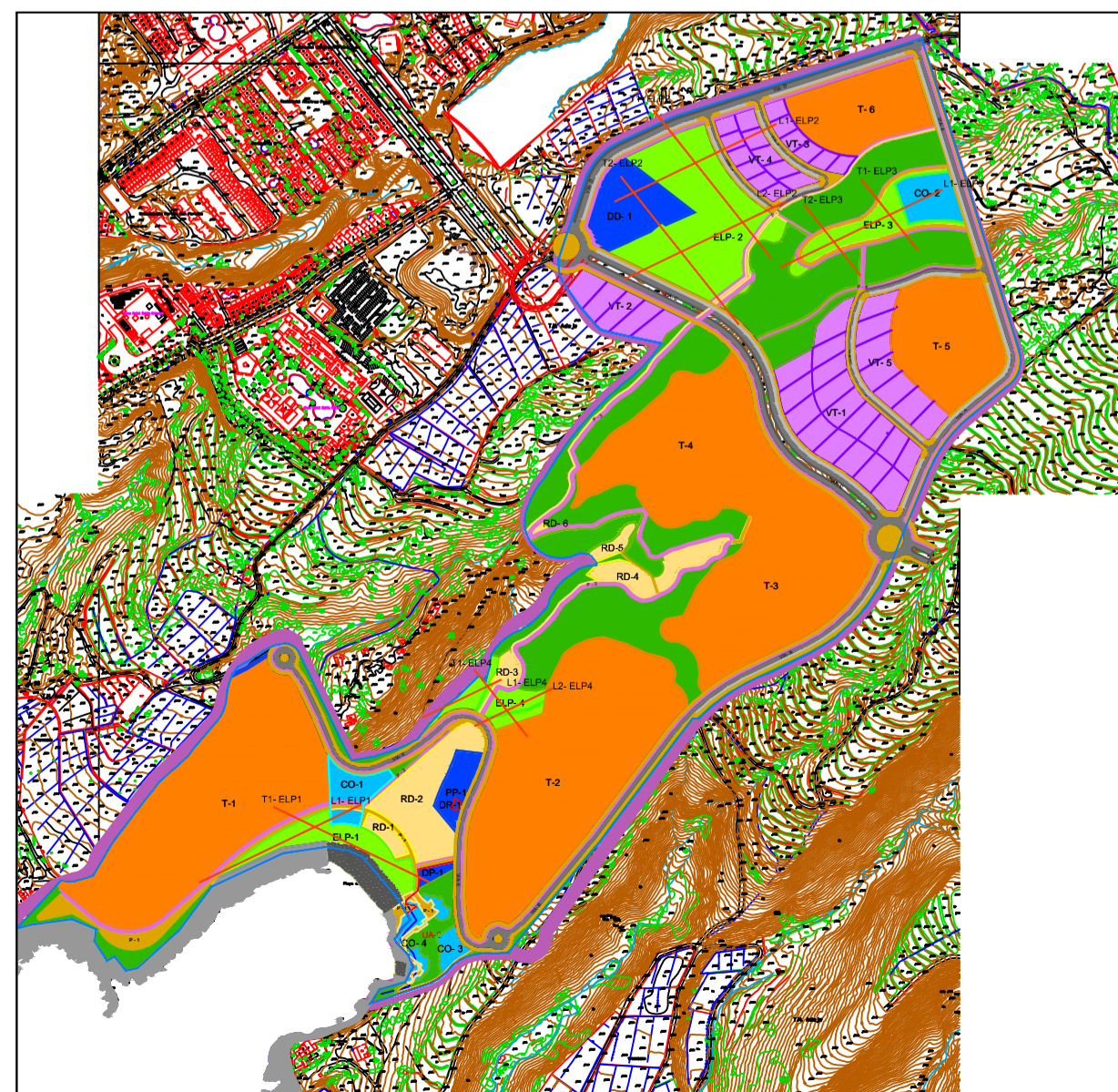
ELP-2



ELP-2



T1-ELP2



PLANO DE INFORMACIÓN: CLINOMETRICOS ESPACIOS LIBRES ZONAS ACCESIBLES (ELP-1 - ELP-2)		P-2.13
REVISION PARCIAL 02 DEL PLAN GENERAL DE ADEJE SECTOR SO.6 PUERTITO DE ADEJE		E-1:500
SITUACION: ADEJE		BB-1
PROMOTOR: AYUNTAMIENTO DE ADEJE		JULIO 2015
OBSERVACIONES:		
JAVIER ALVAREZ PEÑATE ARQUITECTO, COLEG.947	SILVIA de MIGUEL GARCIA ARQUITECTO, COLEG.1842	ADM ALVAREZ Y DE MIGUEL ARQUITECTOS S/C de TENERIFE 1996
ALVAREZ Y DE MIGUEL ARQUITECTOS ALVAREZ Y de MIGUEL ARQUITECTOS - MIRAFLORES 90 - 38003 SANTA CRUZ DE TENERIFE - TLF: 922531421 - estudio@admarchitectos.com		