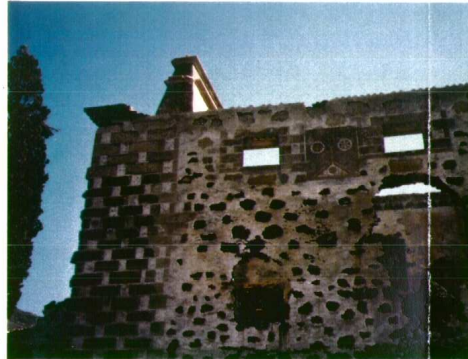




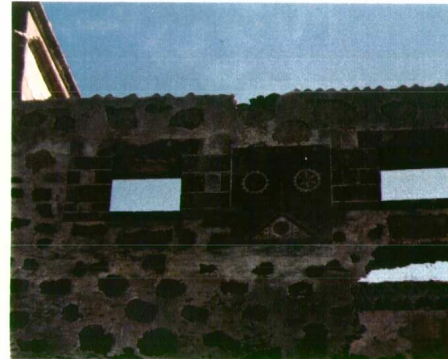
1



2



3



4



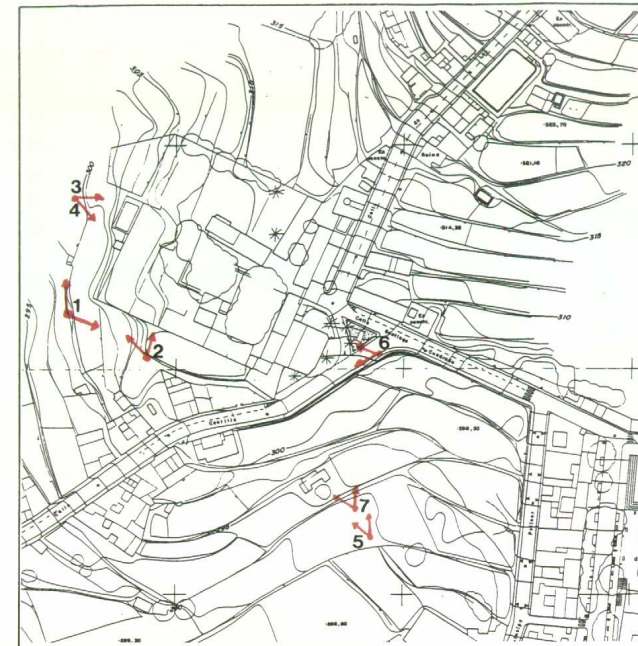
5







6



7



PROYECTO	FASE 2ª PLAN GENERAL DE ORDENACION. ACTUACIONES URGENTES: MODIFICACION PUNTUAL DE NN. SS. EN CASA FUERTE Y ENTORNO. ADEJE	
	 GESTION DE PLANEAMIENTOS DE CANARIAS S.A.	ILUSTRE AYUNTAMIENTO DE LA VILLA DE ADEJE 
PLANO	FOTOGRAFIAS	Nº 1.8
	ESCALA DELINEADO	ABRIL 1.997
	ARQUITECTO PEDRO-G. PALOMAR ELVIRA	
	CALLE TIZON 3, 1º. T: 63.22.37. LA LAGUNA. TENERIFE.	