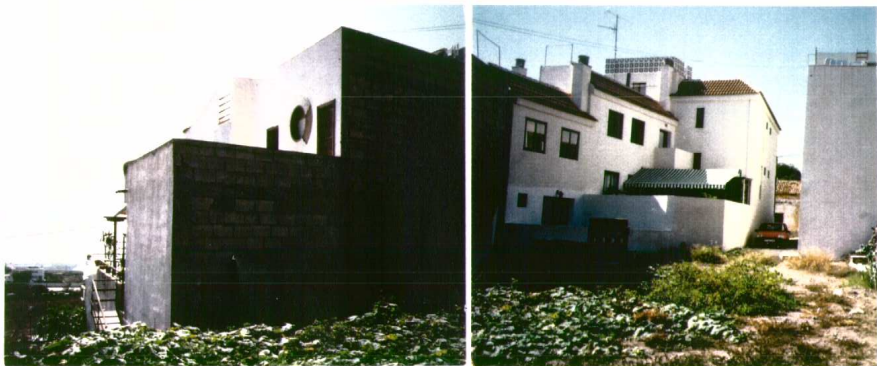




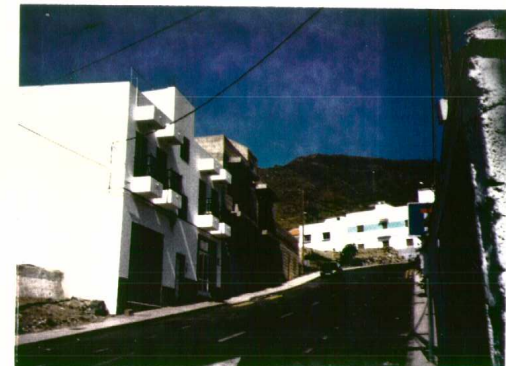
1



2



3



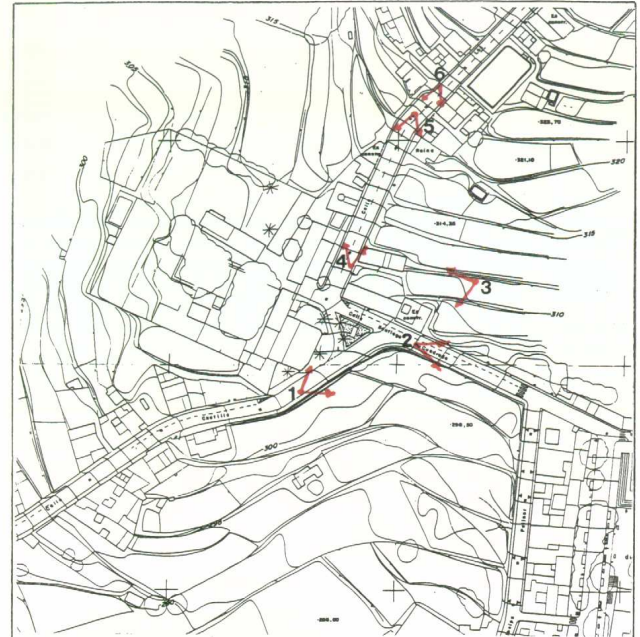
4






5



6



PROYECTO	FASE 2ª PLAN GENERAL DE ORDENACION, ACTUACIONES URGENTES: MODIFICACION PUNTUAL DE NN. SS. EN CASA FUERTE Y ENTORNO. ADEJE	
	 GESTION DE PLANEAMIENTOS DE CANARIAS S.A.	 ILUSTRE AYUNTAMIENTO DE LA VILLA DE ADEJE
PLANO	FOTOGRAFIAS	Nº 1.10
	ESCALA DELINEADO	ABRIL 1.997
 ARQUITECTO PEDRO-G. PALOMAR ELVIRA	CALLE TIZON 3, 1º. T: 63.22.37. LA LAGUNA. TENERIFE.	