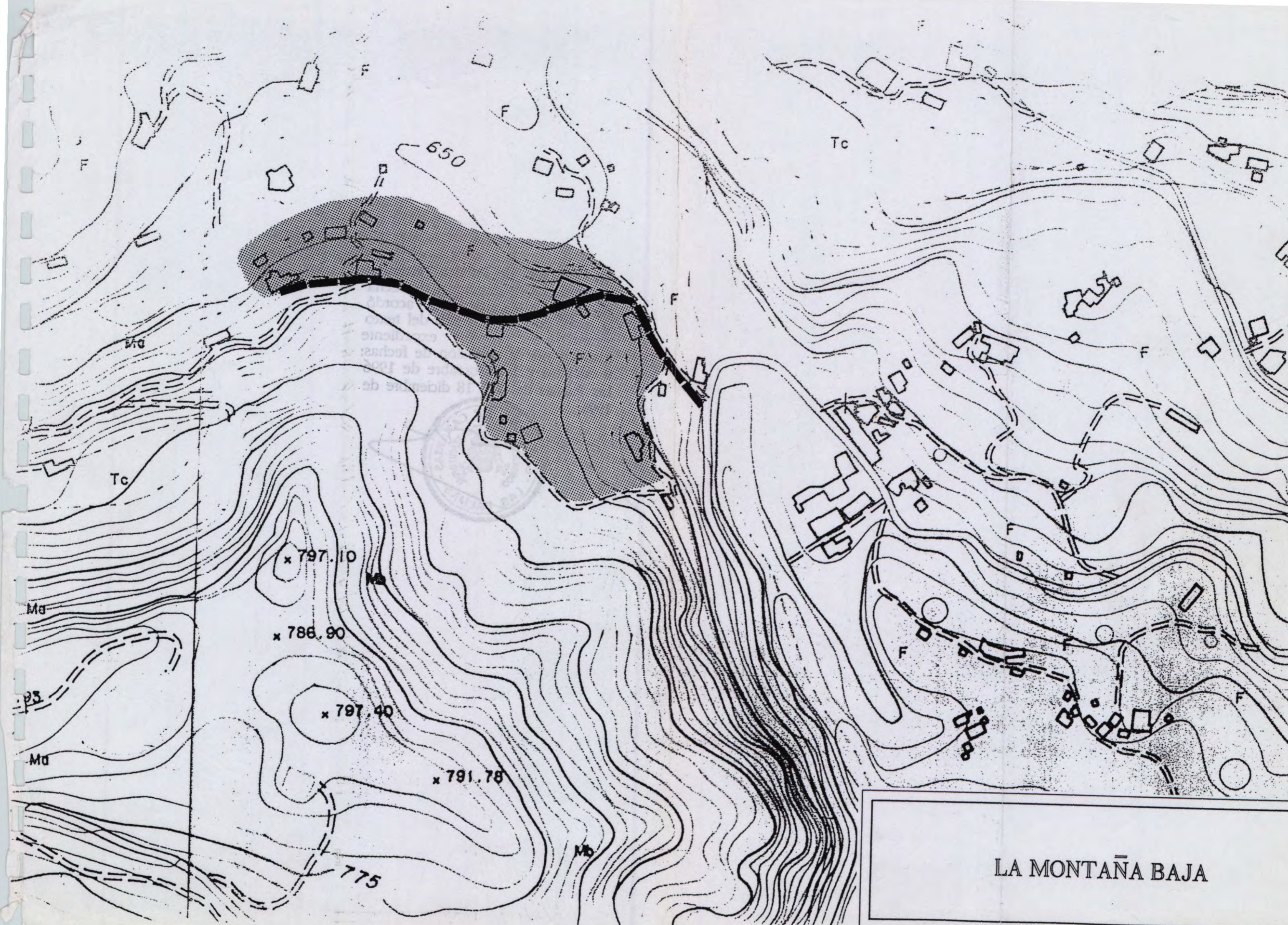
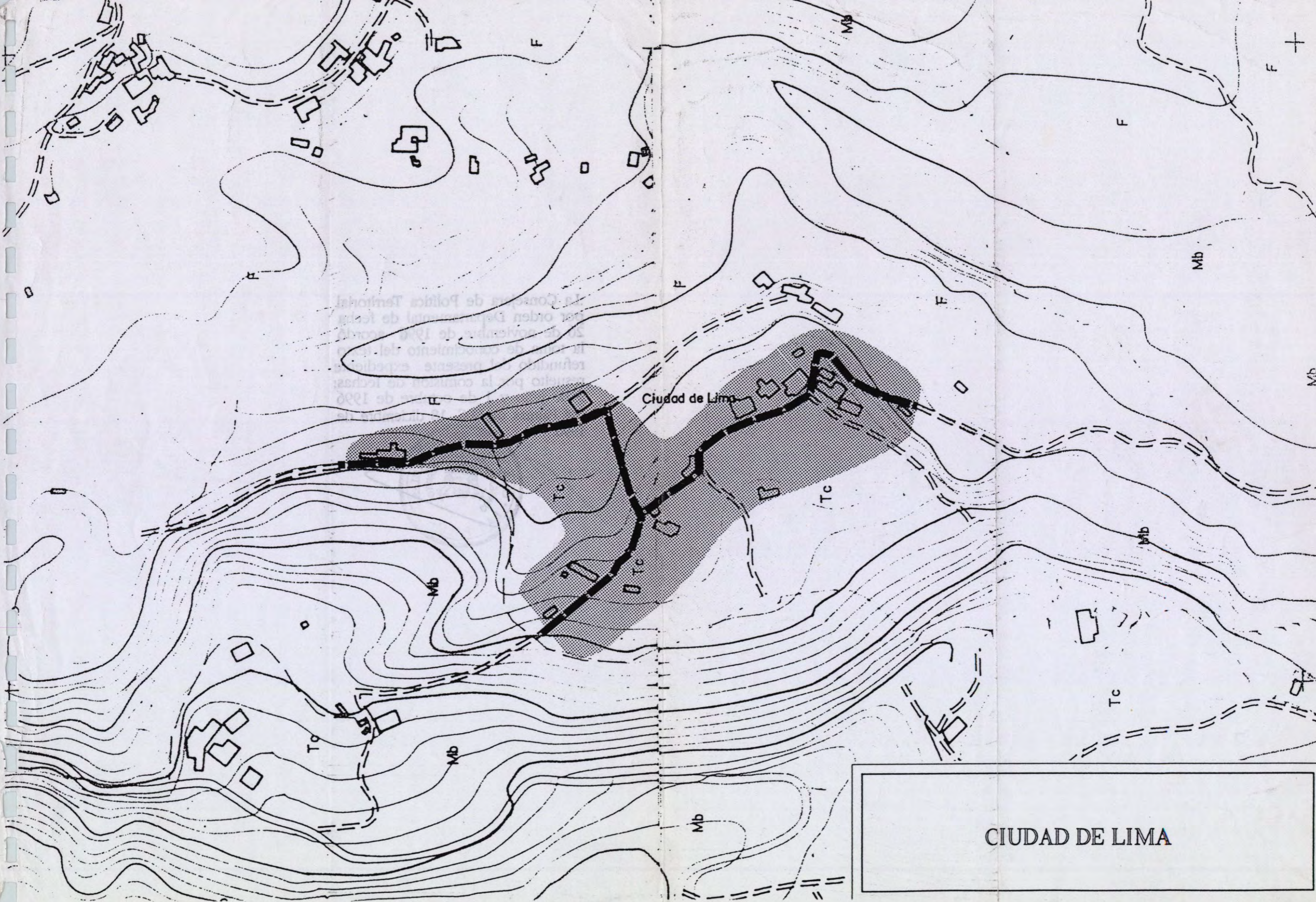


CERCADOS DE ARAÑA

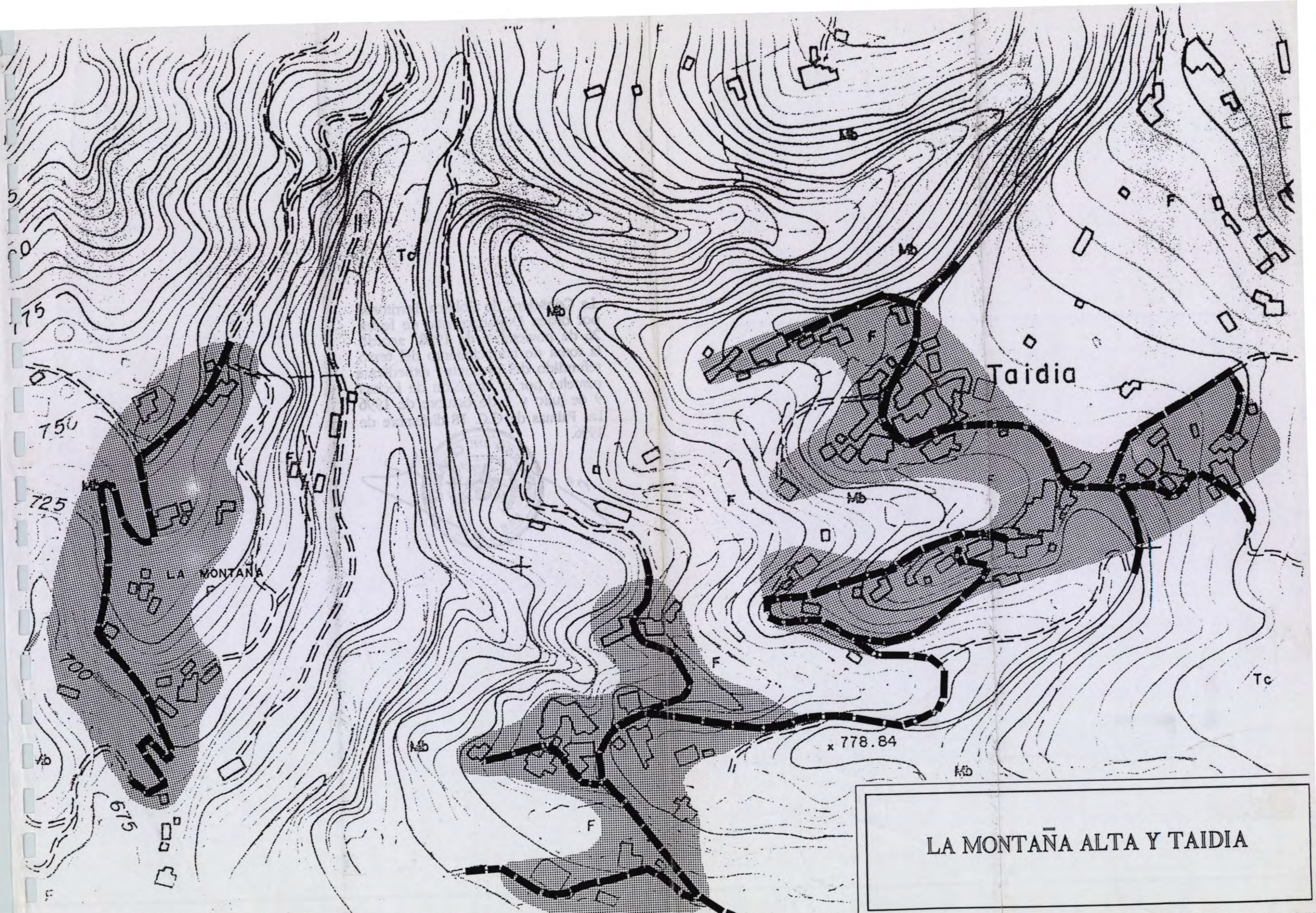


LA MONTAÑA BAJA



Ciudad de Lima

CIUDAD DE LIMA



5
0
75
750
725
700
619
F

Tc

Mb

Mb

Taidia

LA MONTAÑA

x 778.84

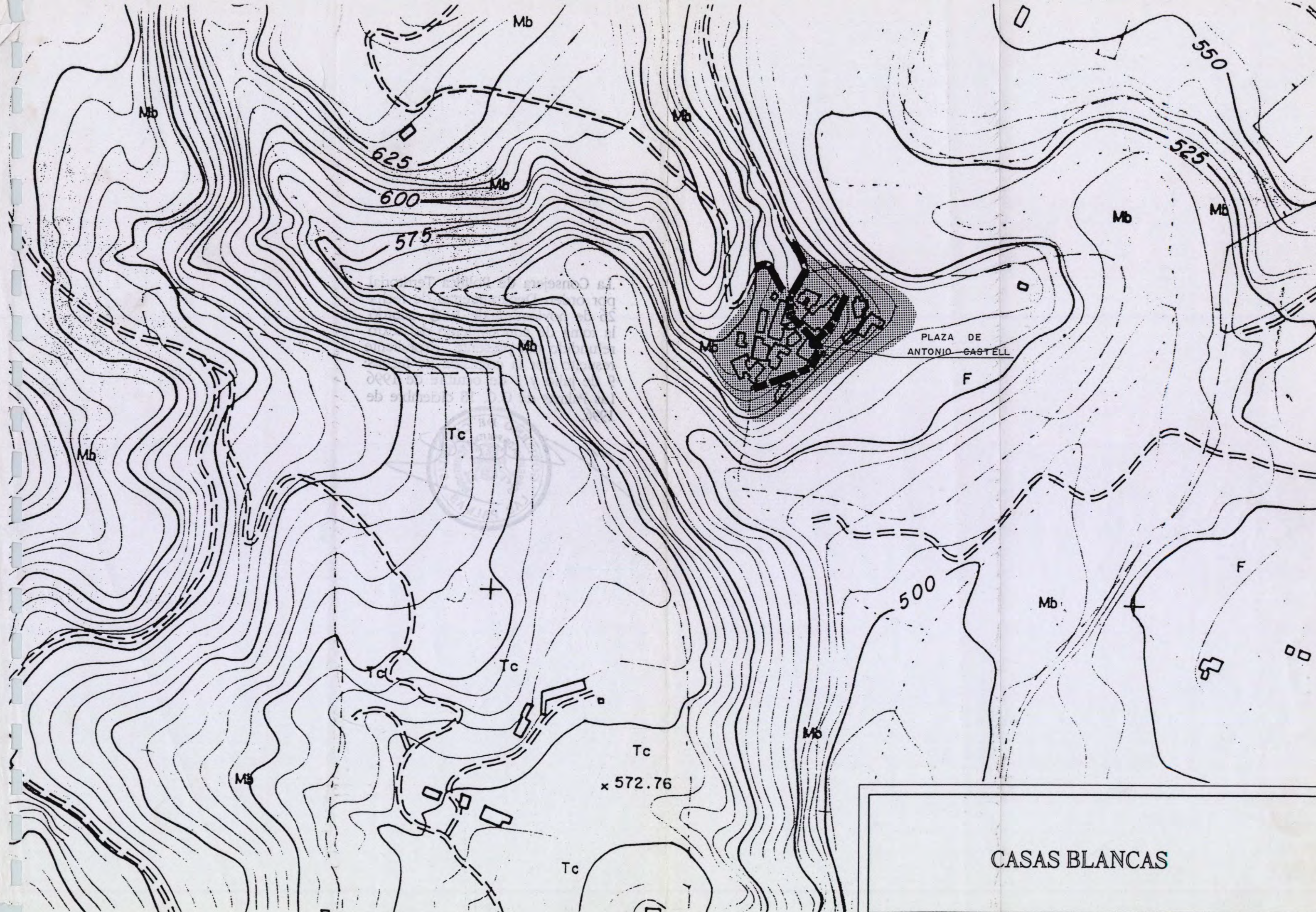
Tc

Mb

F

Mb

LA MONTAÑA ALTA Y TAIDIA

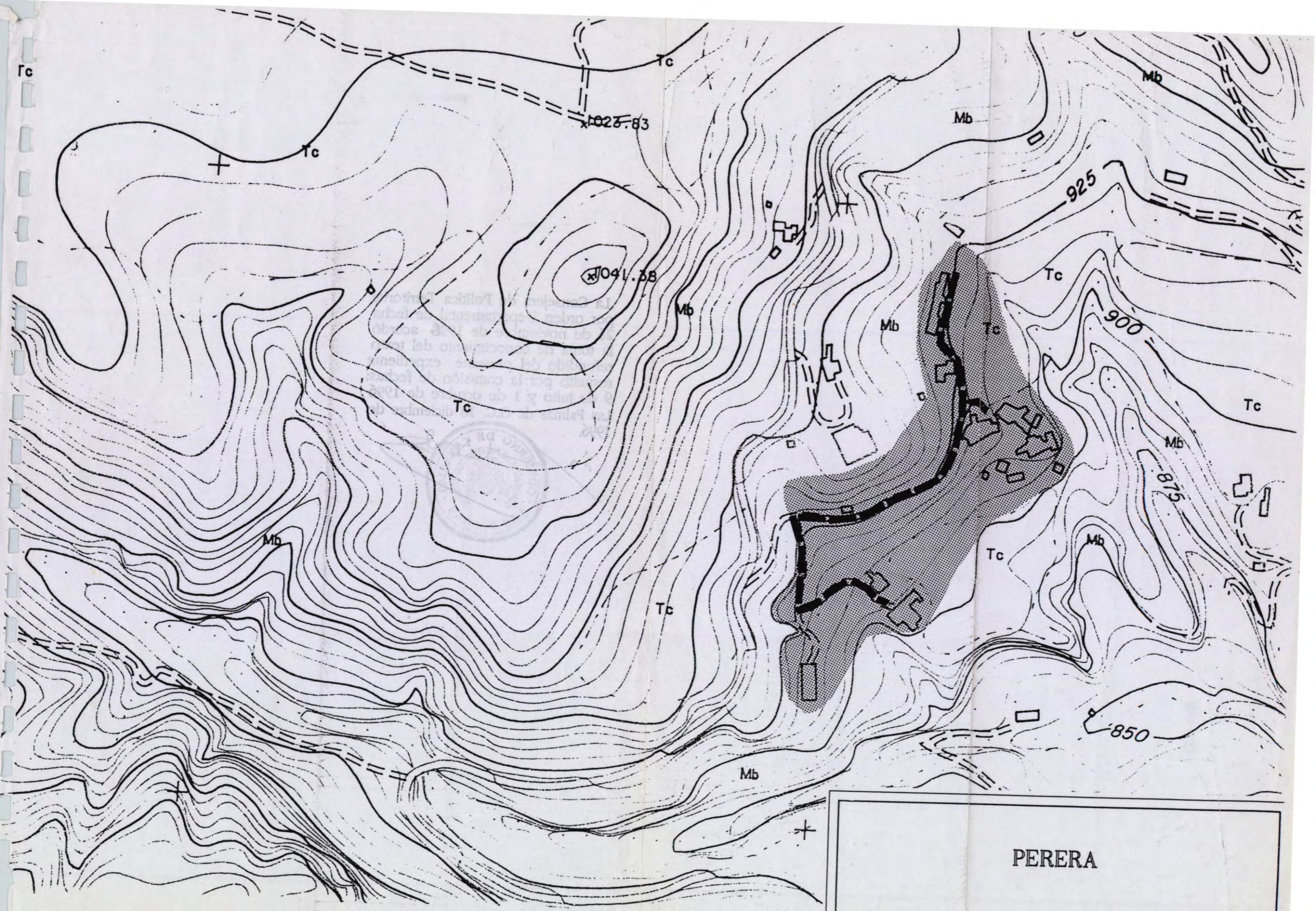


PLAZA DE ANTONIO CASTELL

F

Tc
x 572.76

CASAS BLANCAS



Tc

Tc

Mb

Mb

1025.38

Tc

925

1041.38

Mb

Tc

900

Tc

Mb

Tc

Tc

Mb

875

Mb

Tc

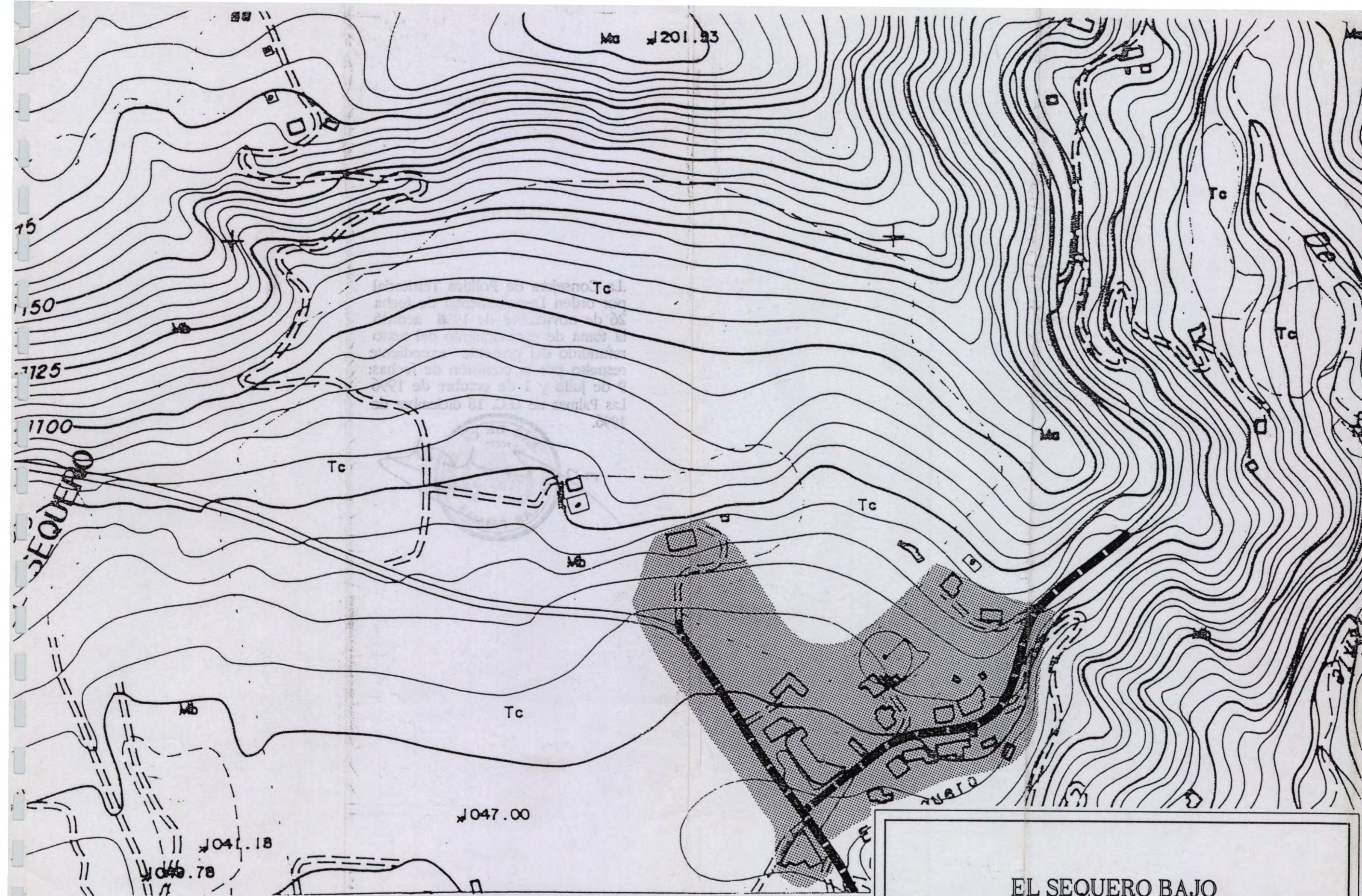
Mb

Tc

850

Mb

PERERA



EL SEQUERO BAJO