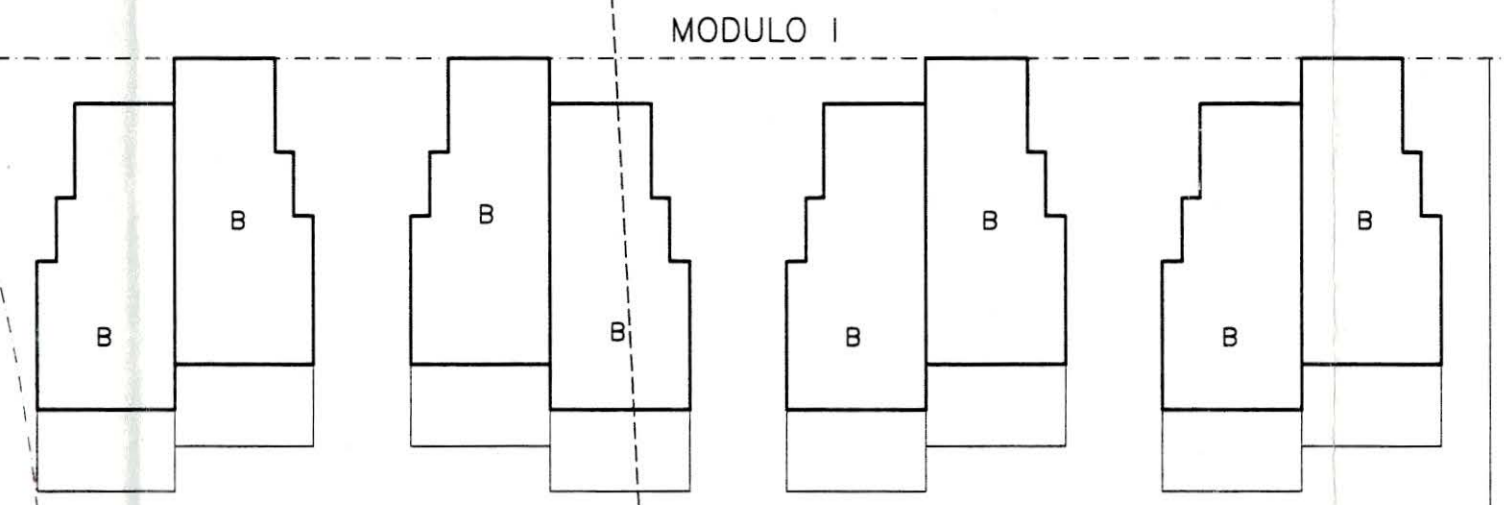
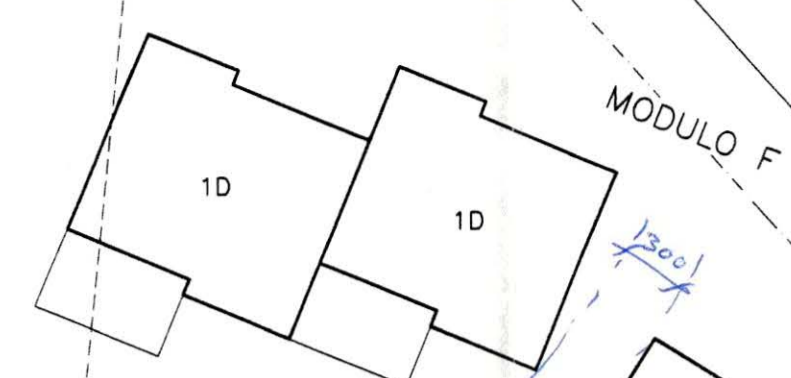


PARCELA 121  
S=1485'00m<sup>2</sup>

PARCELA 120  
S=1660'00m<sup>2</sup>



MODULO I



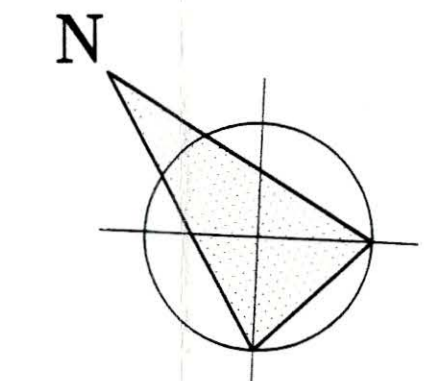
MODULO F

PARCELA 119  
S=1440'00m<sup>2</sup>

**OCUPACION DE LA EDIFICACION**

APARTAMENTOS DE 1D:	31 x 60,00 =	1.860,00
APARTAMENTOS DE 2D:	4 x 69,40 =	277,60
BUNGALOWS	: 18 x 50,00 =	900,00
RECEPCION	: 1 x 38,85 =	38,85
MINIMERCADO	: 1 x 16,05 =	16,05
<b>TOTAL</b>	<b>=</b>	<b>3.092,50 (25%)</b>

Nº DE PLANTAS : DOS  
ALTURA MAXIMA : 6'35m.  
VOLUMEN : 1'5m<sup>3</sup>/m<sup>2</sup>.



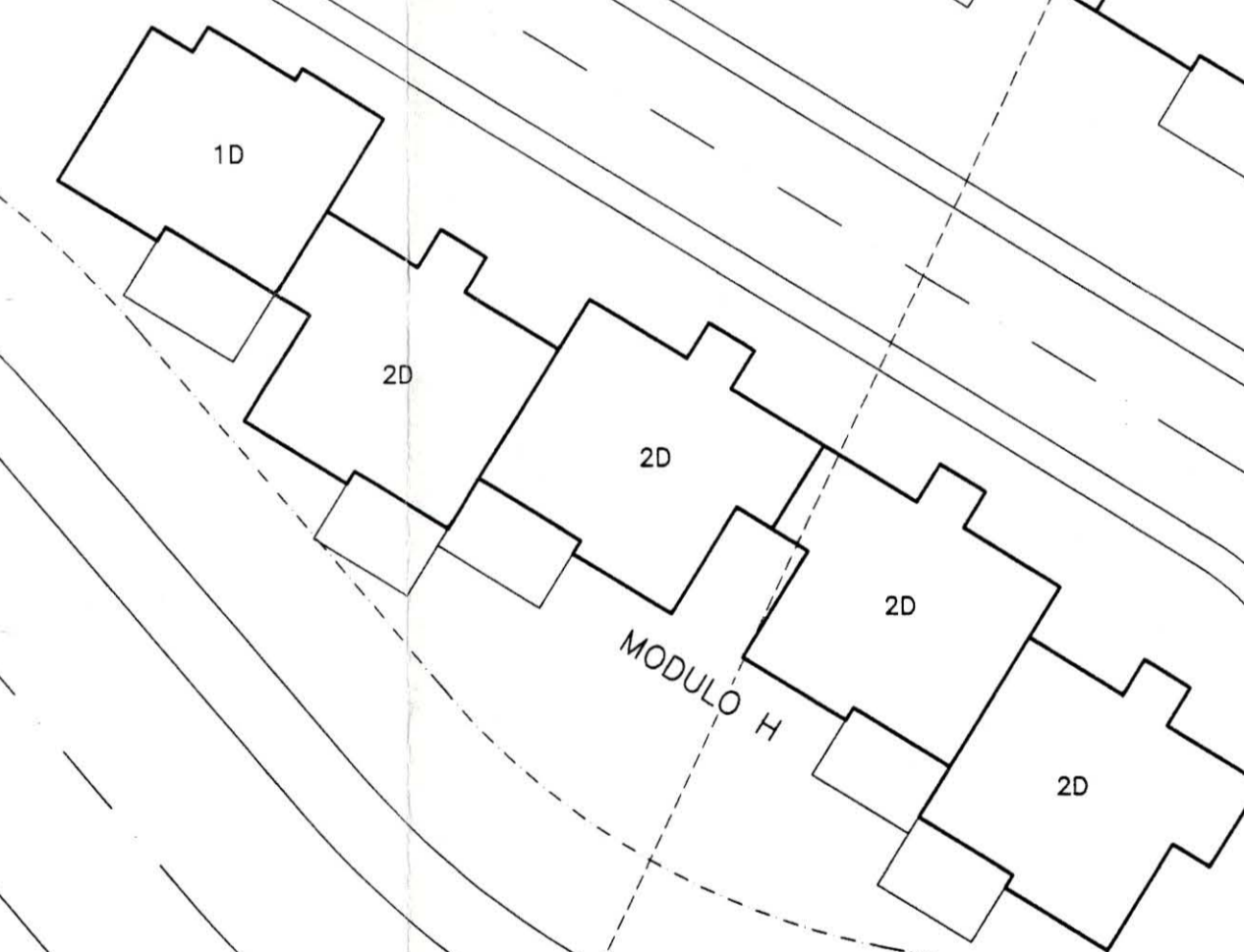
MODULO J

ZONA DEPORTIVA  
S=150'00m<sup>2</sup>

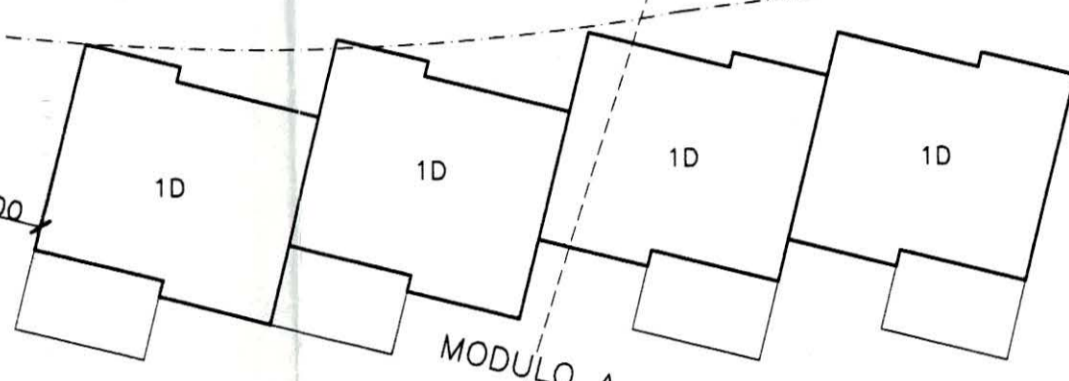
PARCELA 118  
S=1400'00m<sup>2</sup>

PARCELA 117  
S=1700'00m<sup>2</sup>

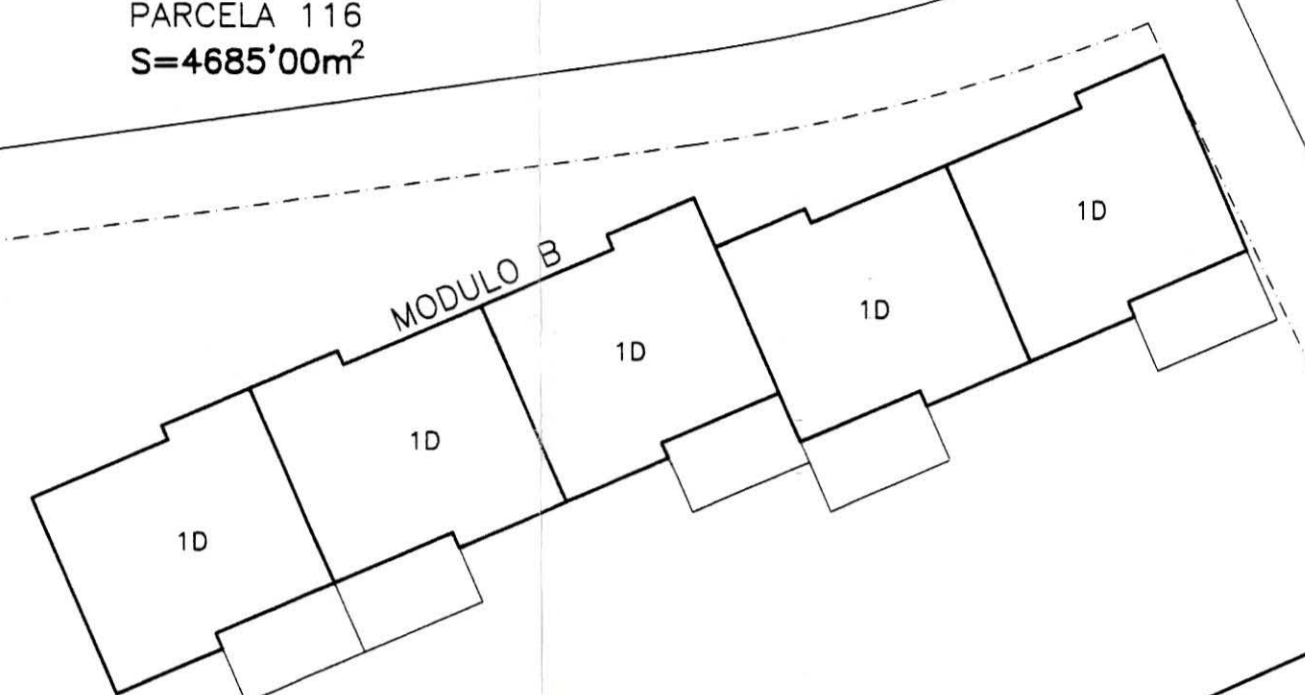
PARCELA 116  
S=4685'00m<sup>2</sup>



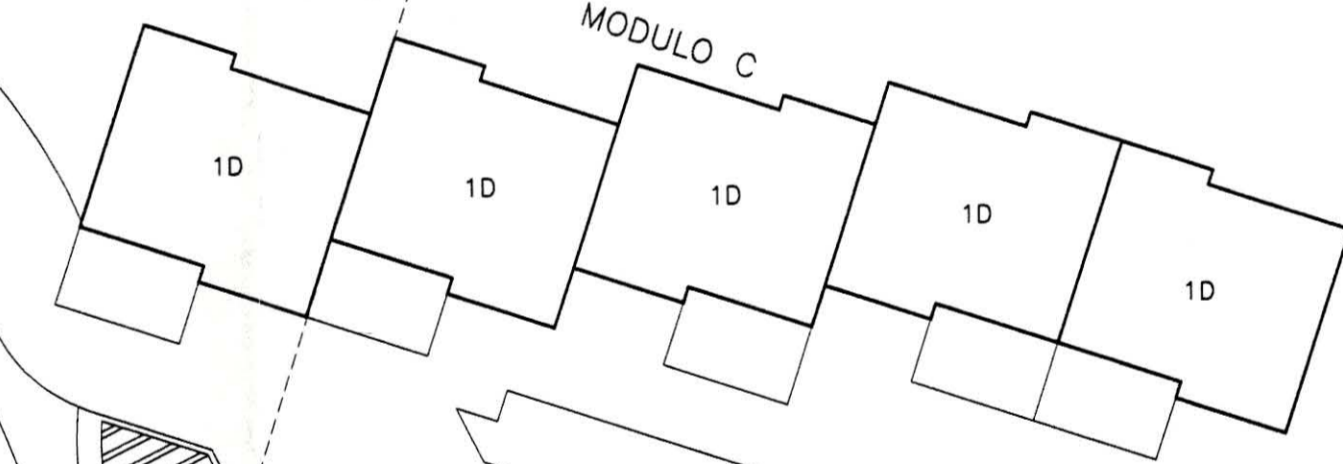
MODULO H



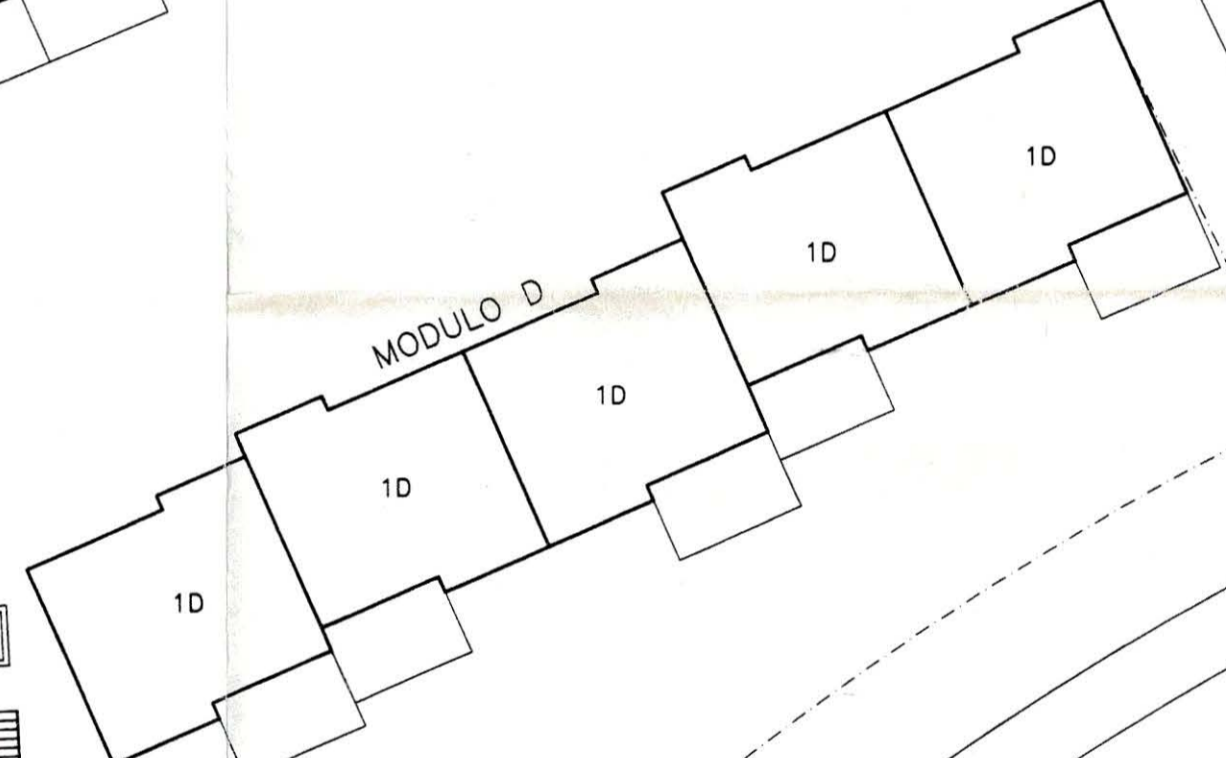
MODULO A



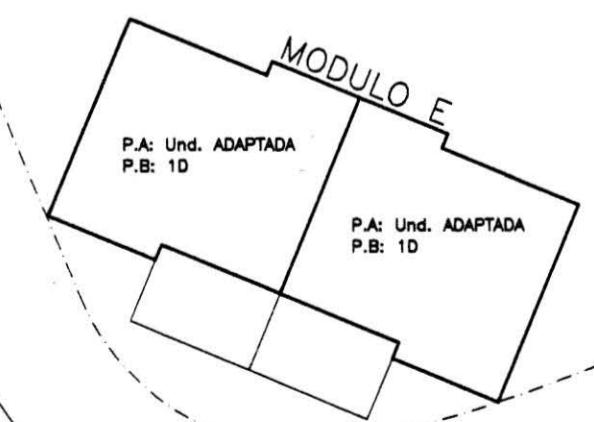
MODULO B



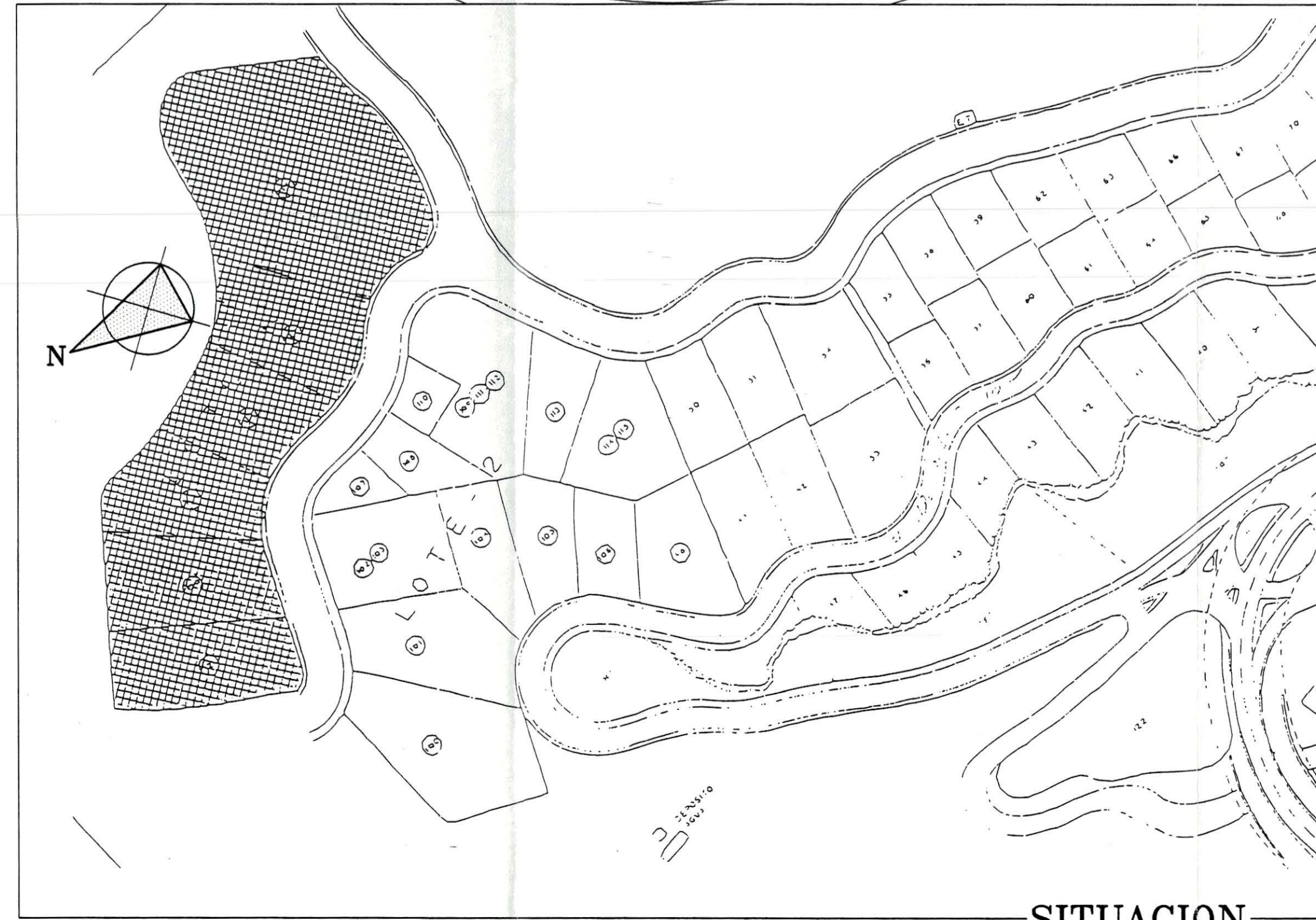
MODULO C



MODULO D

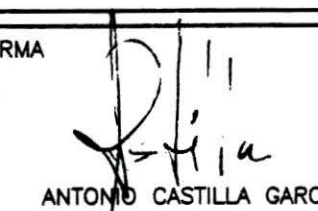


MODULO E



SITUACION



PROYECTO	<b>88 UNIDADES ALOJATIVAS</b>	FECHA	PLANO N.º
	<b>DEIMOS CANARIAS S.L.</b>	<b>SEP<sub>99</sub></b>	<b>1</b>
	<b>SITUACION Y EMPLAZAMIENTO</b>	ESCALAS	<b>1:250</b>
FIRMA	 <b>ANTONIO CASTILLA GARCIA</b>		

EMPLAZAMIENTO

**CASTILLA ARQUITECTO S.L.**  
C/ALEMANIA Nº58 BAJO, 35006 LAS PALMAS DE GRAN CANARIA. TLFNO: 928 23.36.62 FAX: 928 24.01.28