


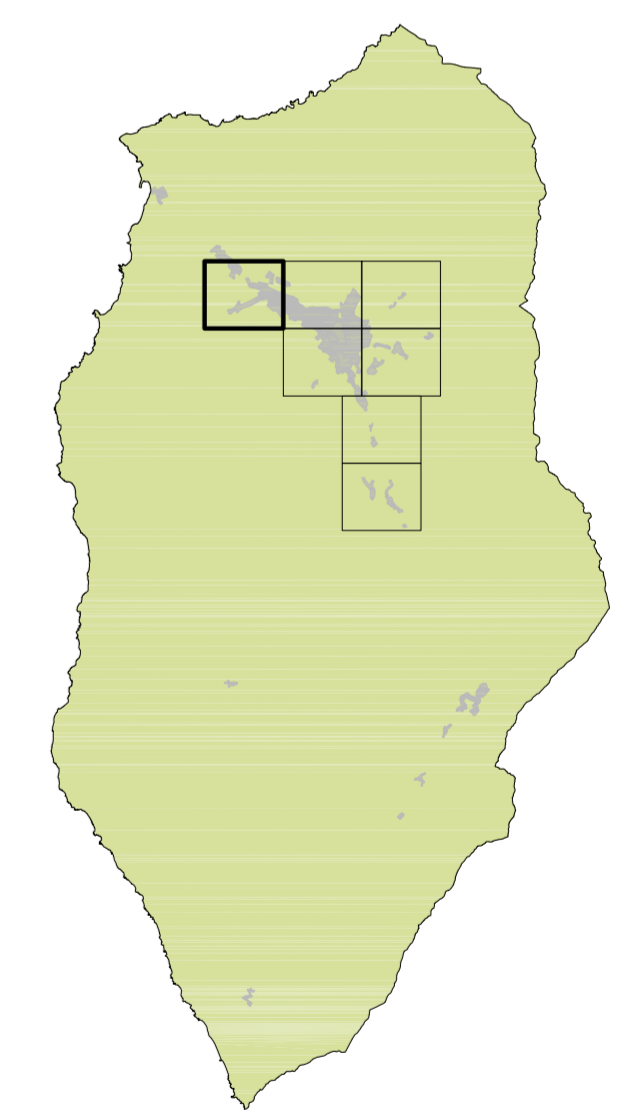
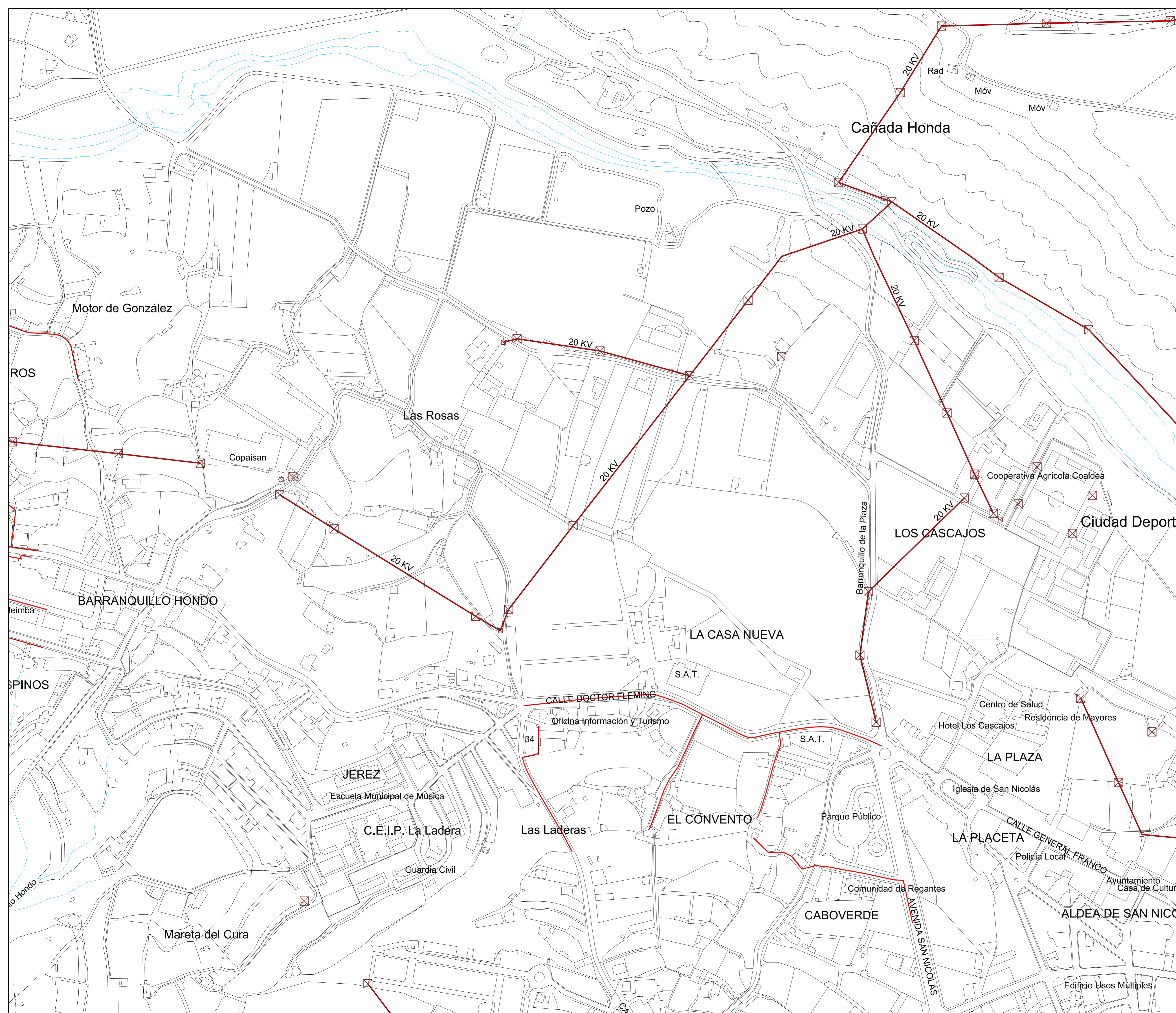


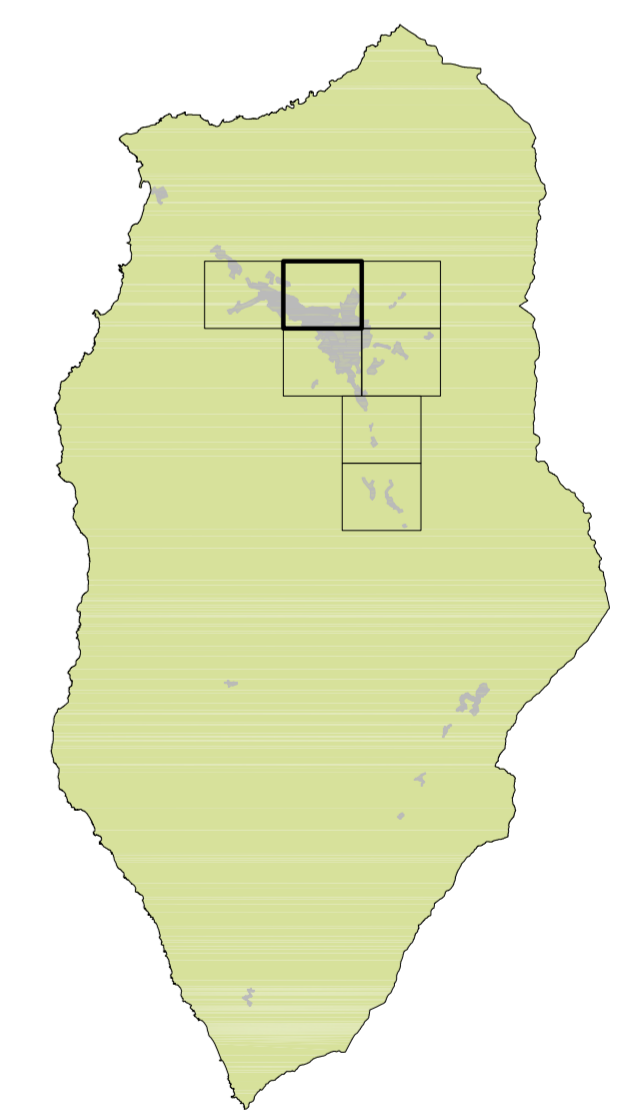
- INFRAESTRUCTURAS**
-  RED ELECTRICA
 -  TENDIDO ELECTRICO
 -  TORRE ELECTRICA



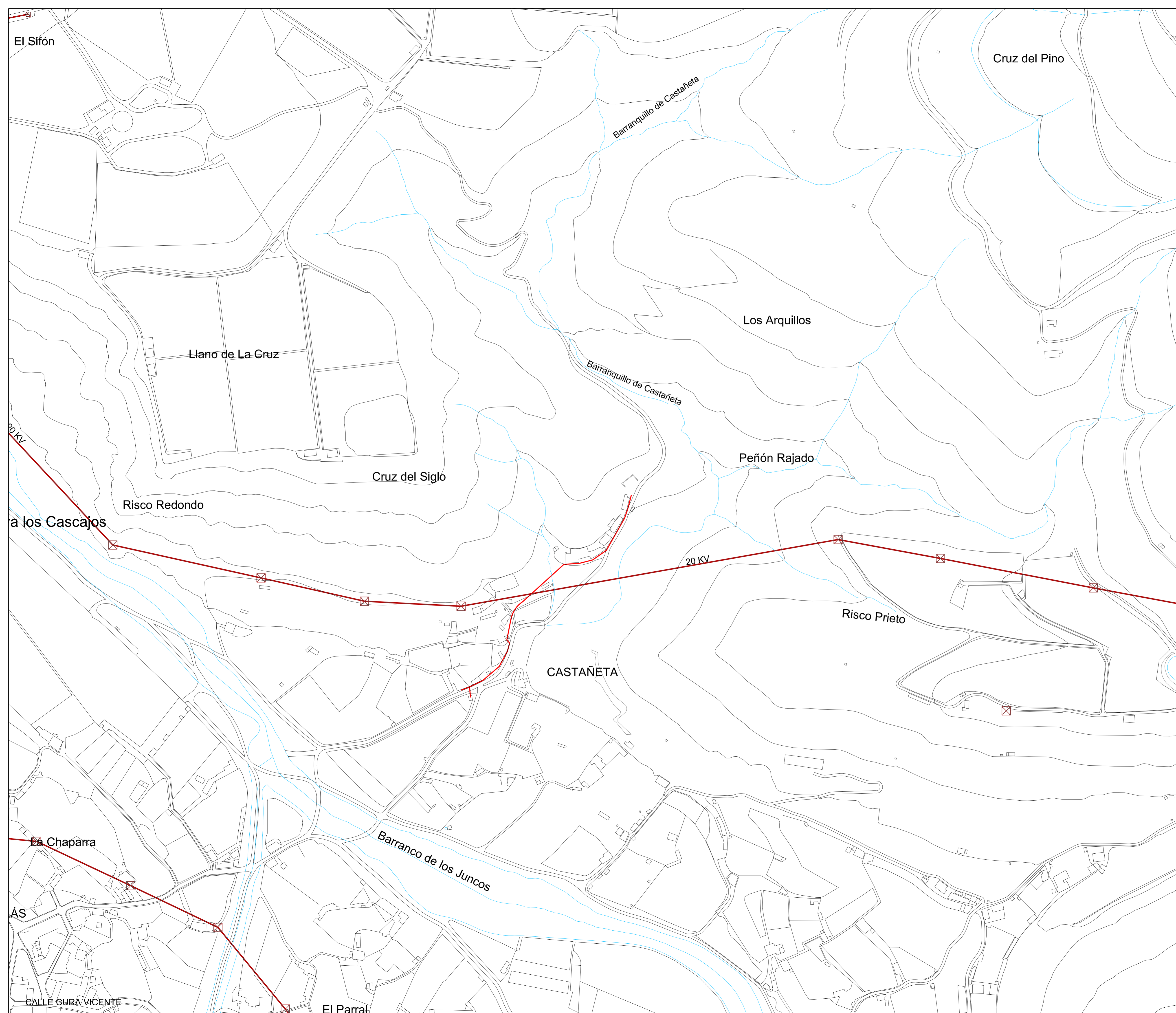
<p align="center">PLAN GENERAL DE ORDENACIÓN SUPLETORIO DE LA ALDEA DE SAN NICOLÁS</p>		<p>FECHA: ABRIL 2017</p>
<p>APROBACIÓN DEFINITIVA</p>		<p>ESCALA: 1:2.000</p>
<p>PLANO DE INFORMACIÓN TERRITORIAL INFRAESTRUCTURAS (Electricidad)</p>		<p>Nº PLANO: IT.3.E1</p>
<p>REDACTOR: EQUIPO TÉCNICO DE GESPLAN</p>		

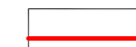




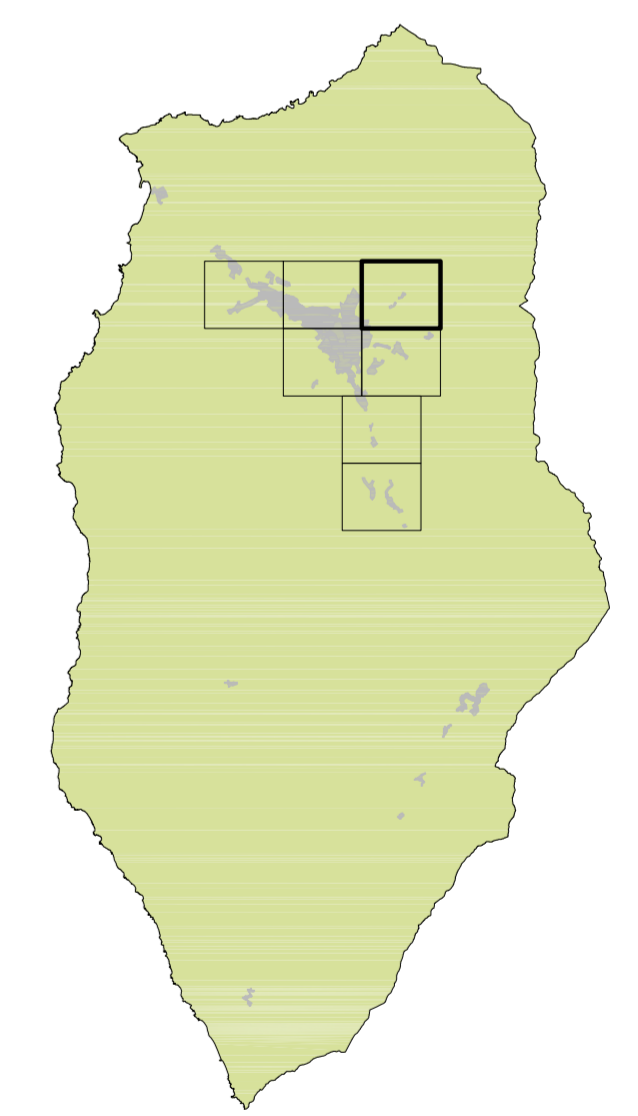
- INFRAESTRUCTURAS**
-  RED ELECTRICA
 -  TENDIDO ELECTRICO
 -  TORRE ELECTRICA

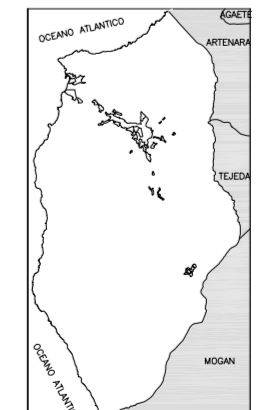
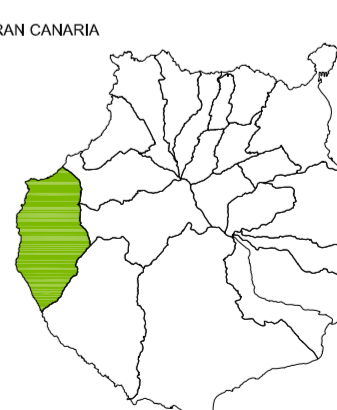
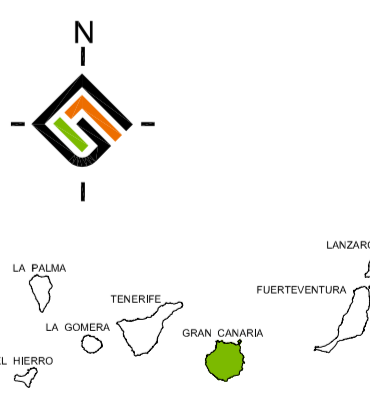




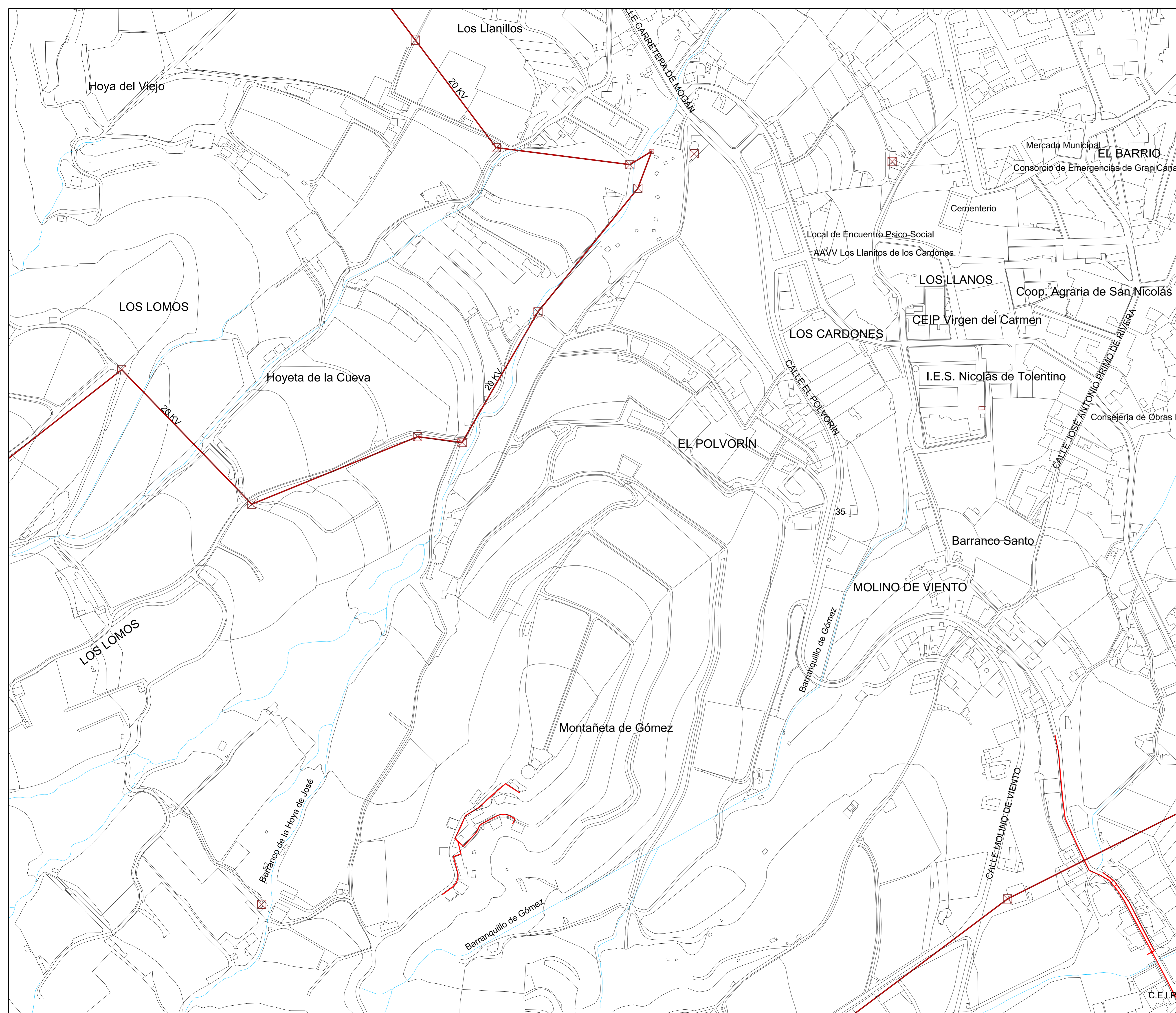
<p align="center">PLAN GENERAL DE ORDENACIÓN SUPLETORIO DE LA ALDEA DE SAN NICOLÁS</p>		
<p>APROBACIÓN DEFINITIVA</p>		
<p>PLANO DE INFORMACIÓN TERRITORIAL</p>		
<p>INFRAESTRUCTURAS (Electricidad)</p>		
<p>REDACTOR: EQUIPO TÉCNICO DE GESPLAN</p>		
<p>FECHA: ABRIL 2017</p>	<p>ESCALA: 1:2.000</p>	<p>Nº PLANO: IT.3.E2</p>



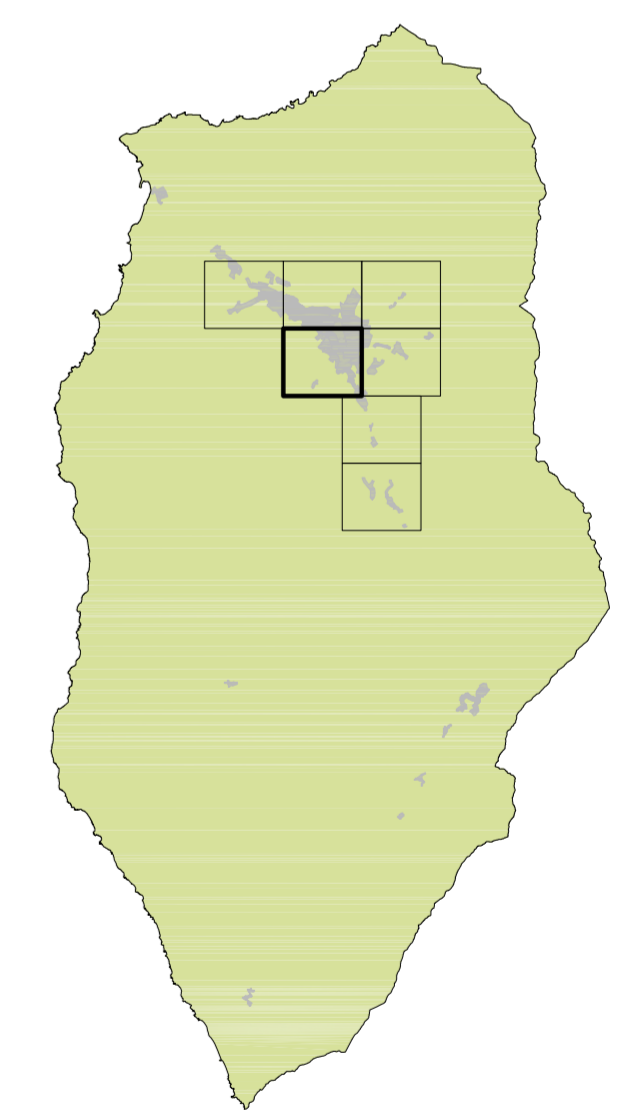
- INFRAESTRUCTURAS**
-  RED ELECTRICA
 -  TENDIDO ELECTRICO
 -  TORRE ELECTRICA



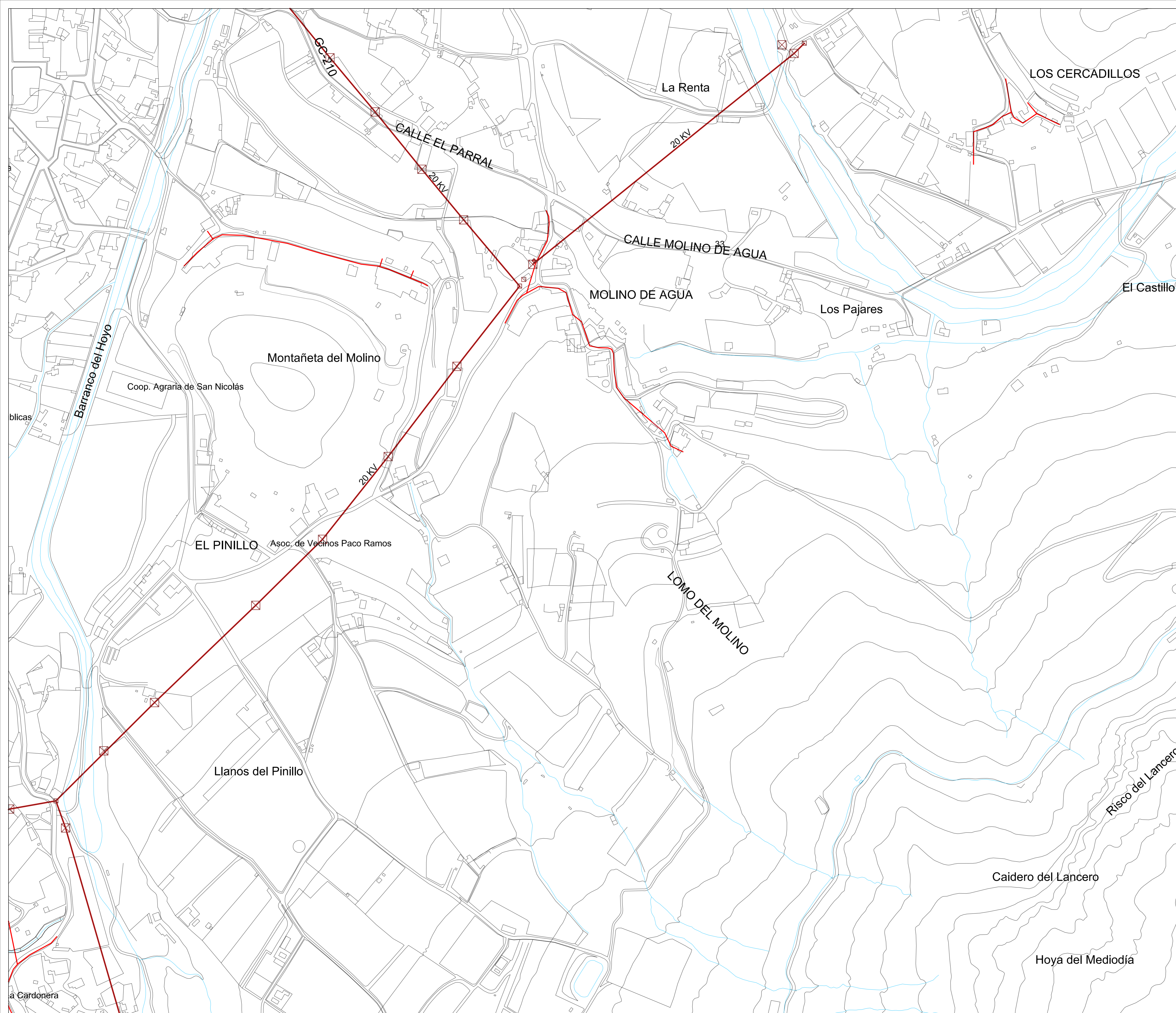
			
<p>PLAN GENERAL DE ORDENACIÓN SUPLETORIO DE LA ALDEA DE SAN NICOLÁS</p> <p>APROBACIÓN DEFINITIVA</p>			<p>FECHA: ABRIL 2017</p> <p>ESCALA: 1:2.000</p>
<p>PLANO DE INFORMACIÓN TERRITORIAL</p> <p>INFRAESTRUCTURAS (Electricidad)</p>			<p>Nº PLANO: IT.3.E3</p>
<p>REDACTOR: EQUIPO TÉCNICO DE GESPLAN</p>			<p>Gobierno de Canarias</p>






- INFRAESTRUCTURAS**
-  RED ELECTRICA
 -  TENDIDO ELECTRICO
 -  TORRE ELECTRICA

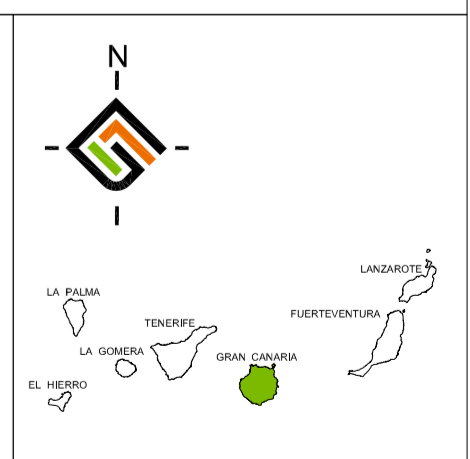
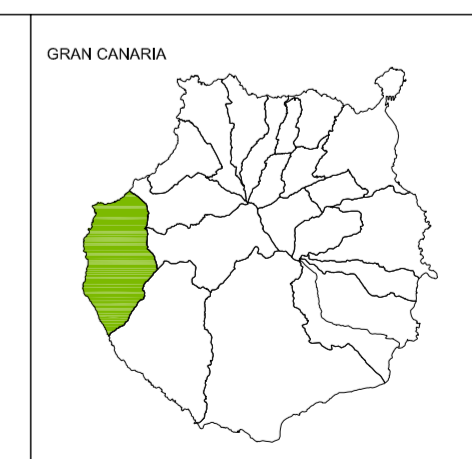
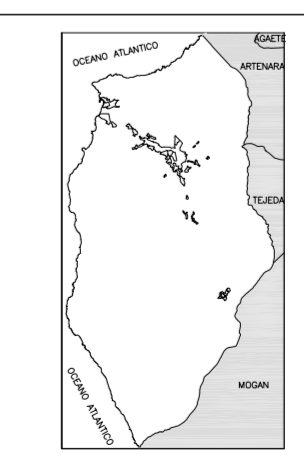
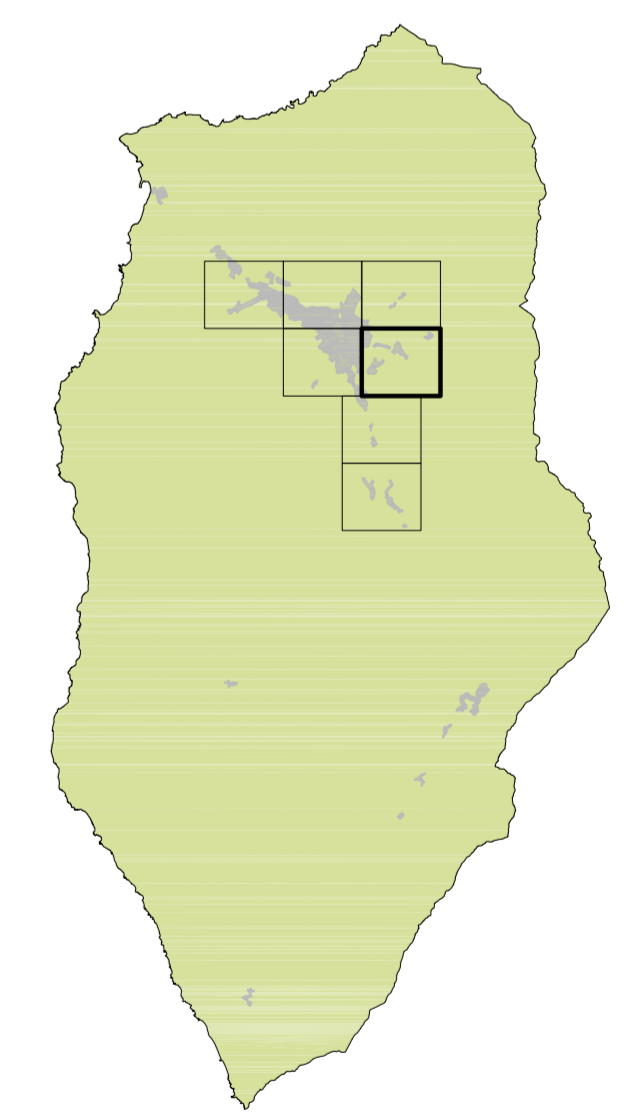




<p>PLAN GENERAL DE ORDENACIÓN SUPLETORIO DE LA ALDEA DE SAN NICOLÁS</p>		<p>FECHA: ABRIL 2017</p>
<p>APROBACIÓN DEFINITIVA</p>		<p>ESCALA: 1:2.000</p>
<p>PLANO DE INFORMACIÓN TERRITORIAL</p>		<p>Nº PLANO:</p>
<p>INFRAESTRUCTURAS (Electricidad)</p>		<p>IT.3.E4</p>
<p>REDACTOR: EQUIPO TÉCNICO DE GESPLAN</p>		

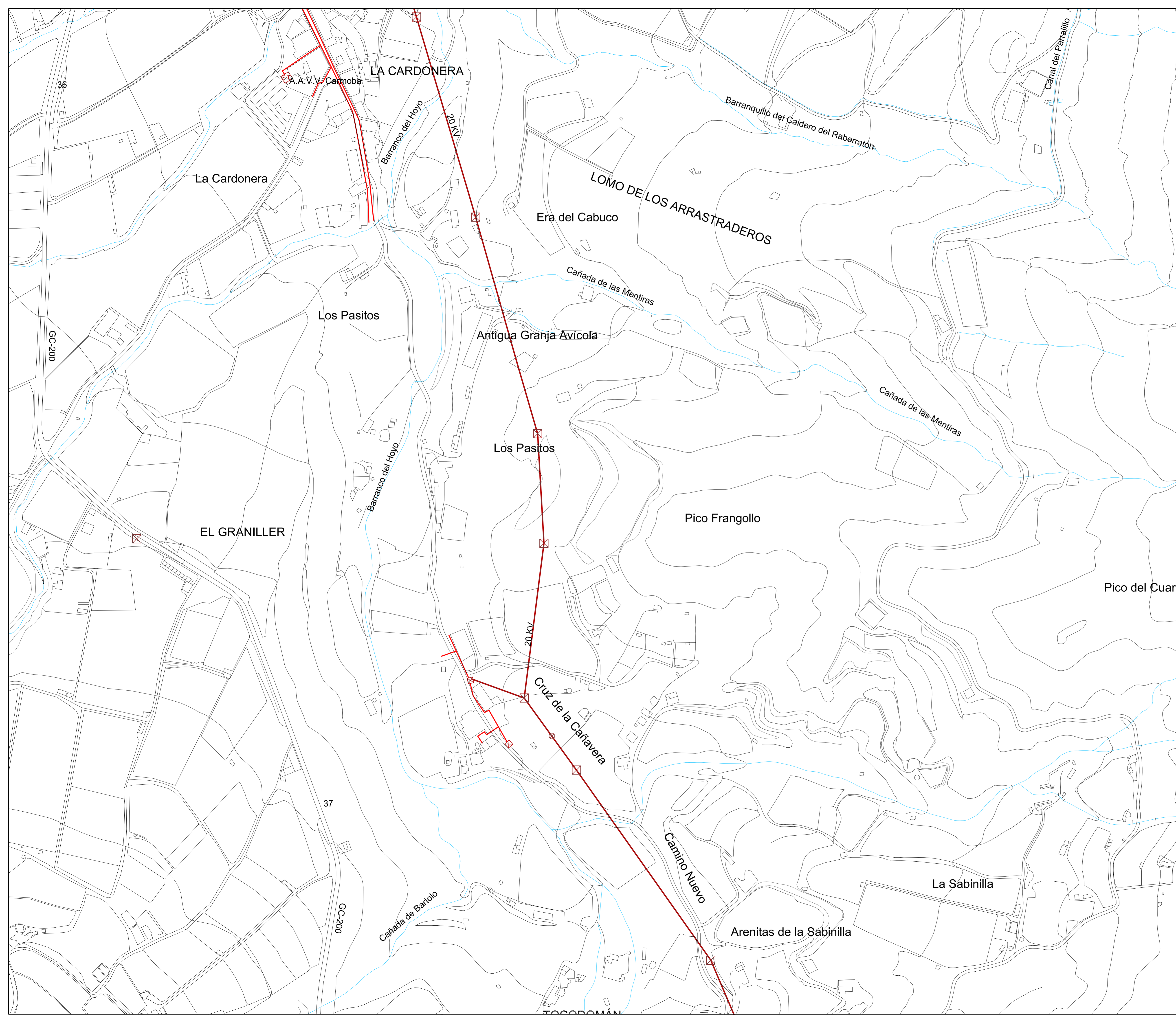




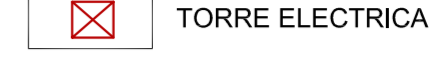
INFRAESTRUCTURAS

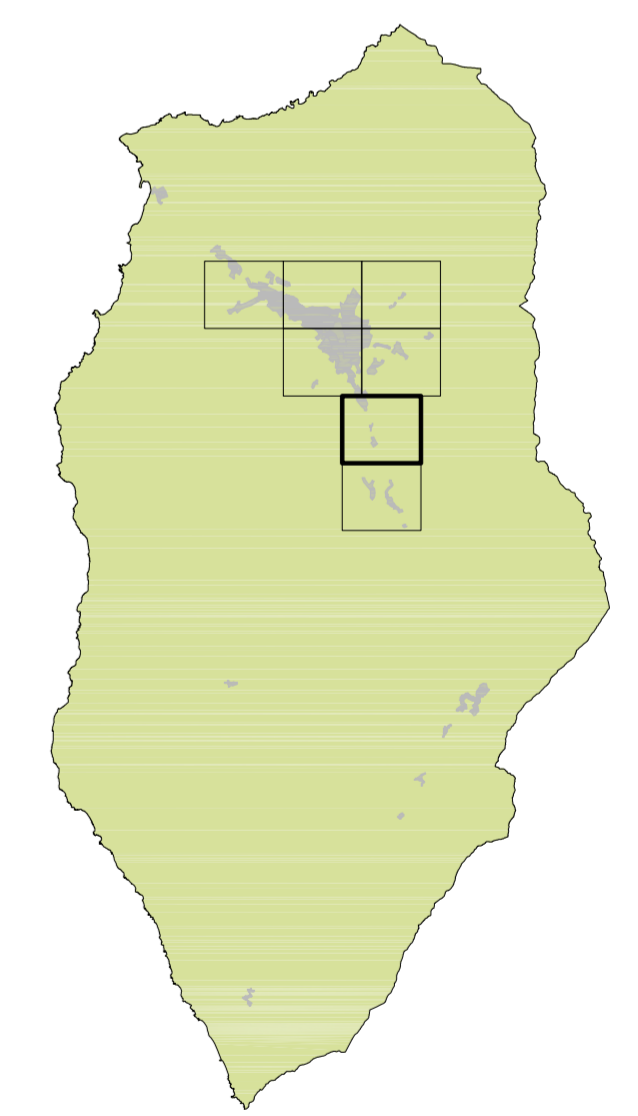
-  RED ELECTRICA
-  TENDIDO ELECTRICO
-  TORRE ELECTRICA

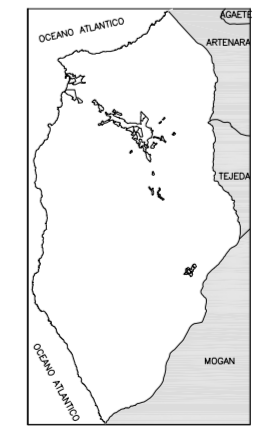

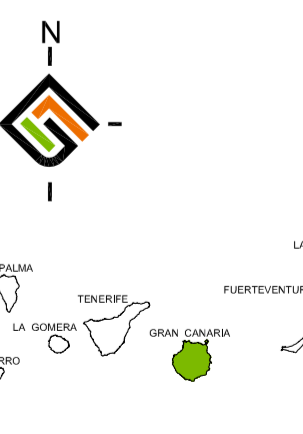




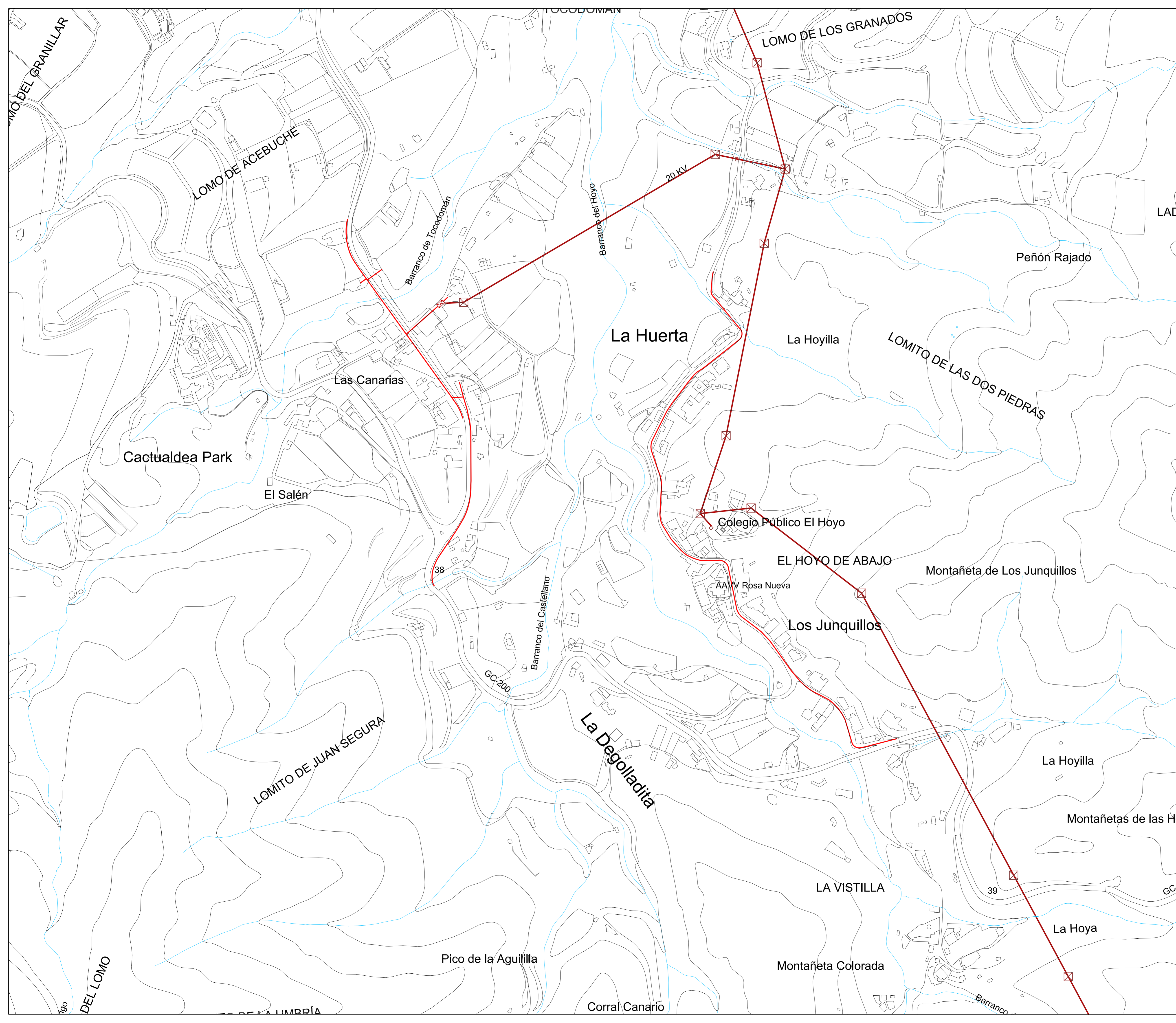
PLAN GENERAL DE ORDENACIÓN SUPLETORIO DE LA ALDEA DE SAN NICOLÁS		FECHA: ABRIL 2017
APROBACIÓN DEFINITIVA		ESCALA: 1:2.000
PLANO DE INFORMACIÓN TERRITORIAL INFRAESTRUCTURAS (Electricidad)		Nº PLANO: IT.3.E5
REDACTOR: EQUIPO TÉCNICO DE GESPLAN		






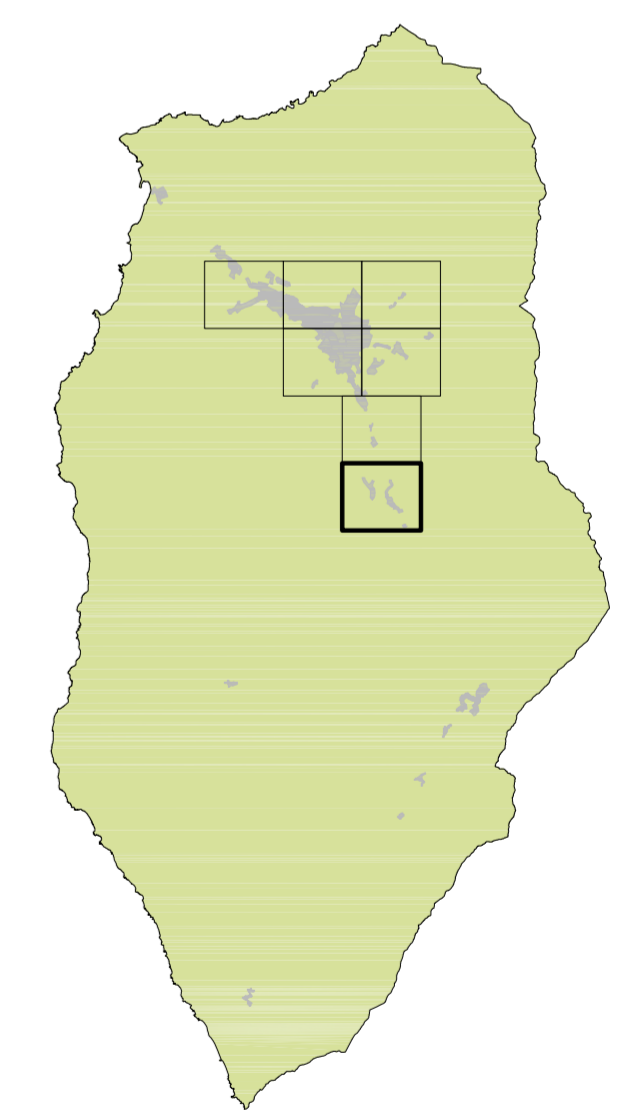
- INFRAESTRUCTURAS**
-  RED ELECTRICA
 -  TENDIDO ELECTRICO
 -  TORRE ELECTRICA



		
<p align="center">PLAN GENERAL DE ORDENACIÓN SUPLETORIO DE LA ALDEA DE SAN NICOLÁS</p>		<p>FECHA: ABRIL 2017</p>
<p>PROBACIÓN DEFINITIVA</p> <p>PLANO DE INFORMACIÓN TERRITORIAL</p> <p>INFRAESTRUCTURAS (Electricidad)</p>		<p>ESCALA: 1:2.000</p>
<p>REDACTOR: EQUIPO TÉCNICO DE GESPLAN</p> 		<p>Nº PLANO: IT.3.E6</p> 



- INFRAESTRUCTURAS**
-  RED ELECTRICA
 -  TENDIDO ELECTRICO
 -  TORRE ELECTRICA



<p>PLAN GENERAL DE ORDENACIÓN SUPLETORIO DE LA ALDEA DE SAN NICOLÁS</p> <p>APROBACIÓN DEFINITIVA</p>		<p>FECHA: ABRIL 2017</p> <p>ESCALA: 1:2.000</p>
<p>PLANO DE INFORMACIÓN TERRITORIAL</p> <p>INFRAESTRUCTURAS (Electricidad)</p>		<p>Nº PLANO: IT.3.E7</p>
<p>REDACTOR: EQUIPO TÉCNICO DE GESPLAN</p>		