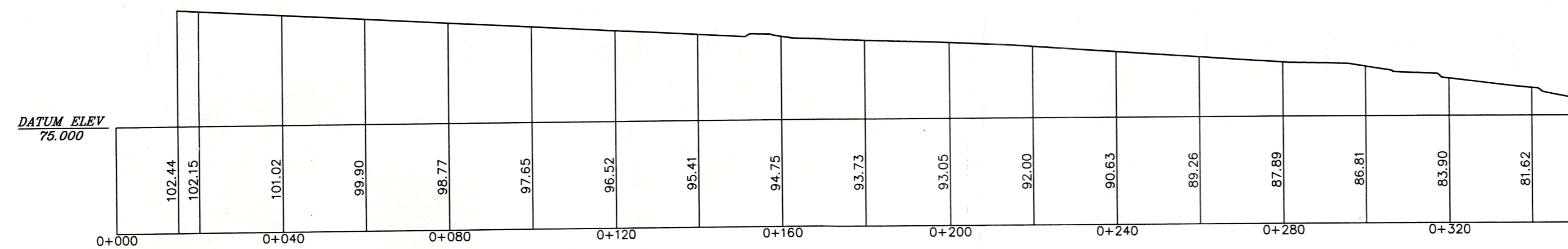
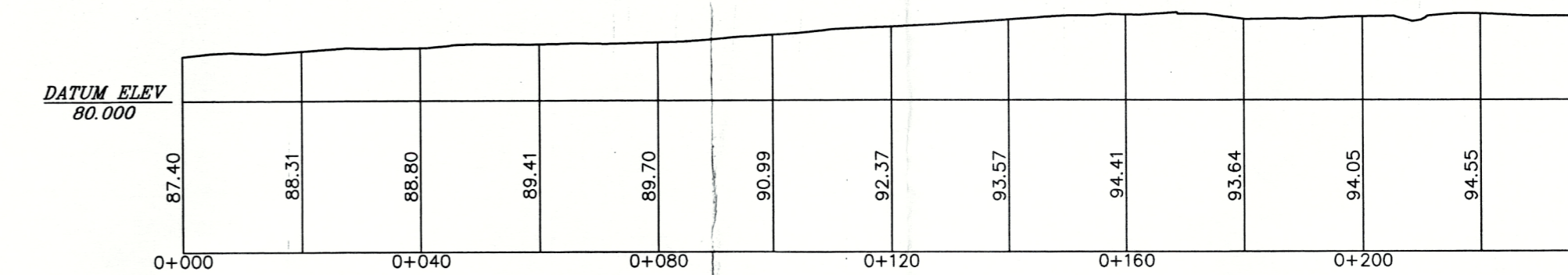


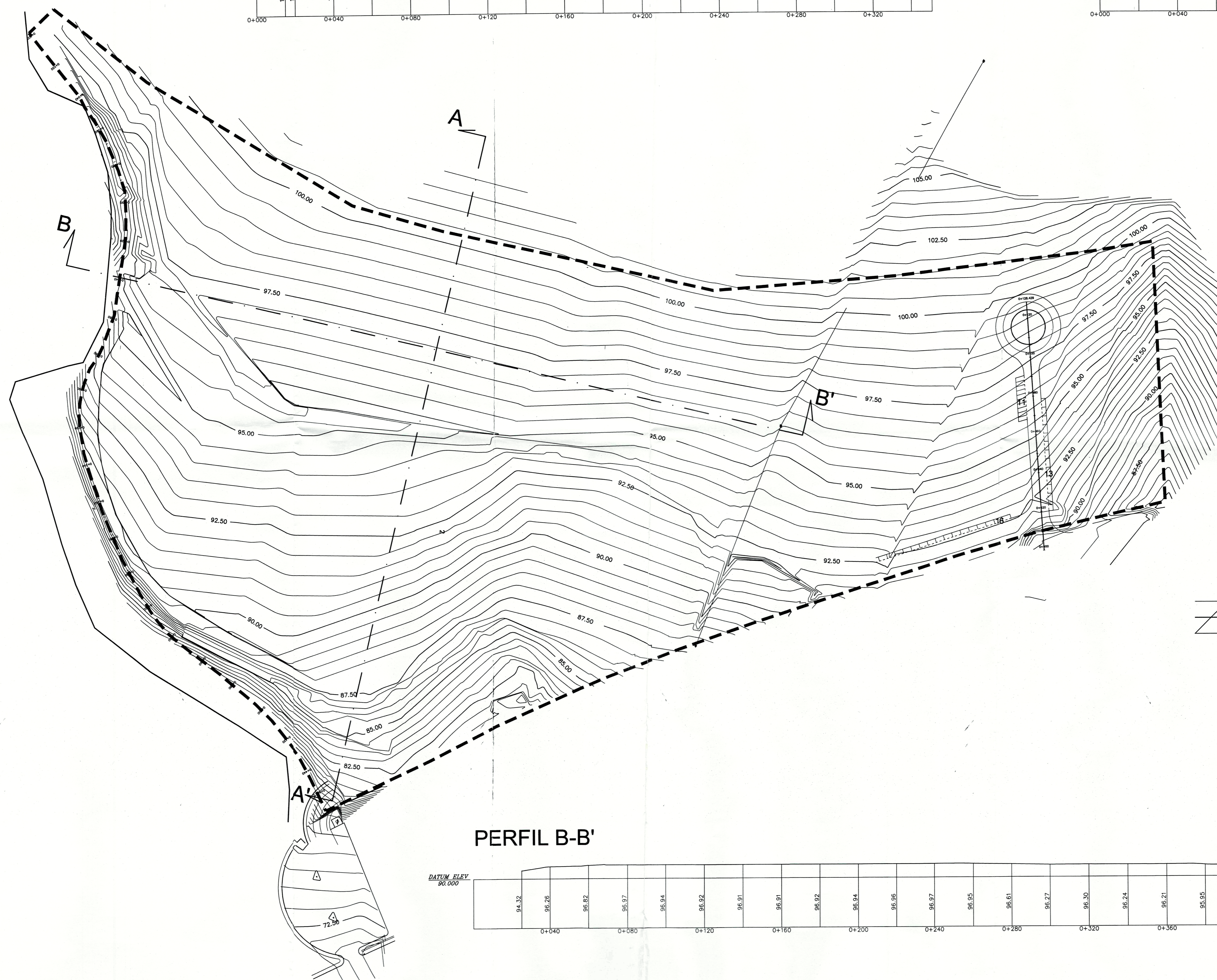
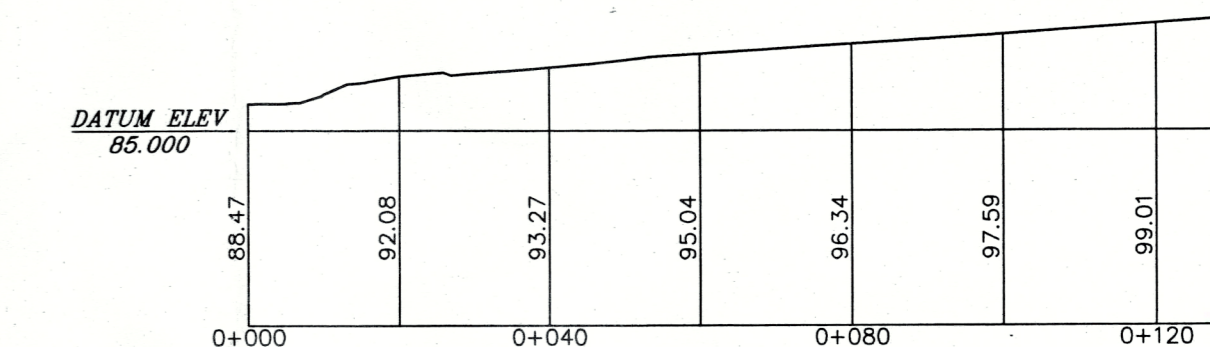
PERFIL A-A'



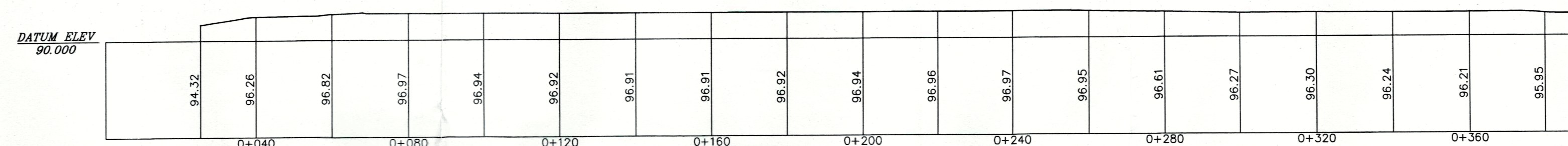
PEATONAL



ACCESO A ROTONDA



PERFIL B-B'



COLEGIO DE ARQUITECTOS DE GUAYMAS
 31 MAY 2006
 VISADO A LOS EFECTOS REGLEMENTARIOS

18 OCT. 2005 - 27 DIC. 2005
 1-5 MAR. 2006
 2-3 JUN. 2006
 Domingo Arias Rodriguez

--- LIMITE DE LA ACTUACION

CORRECCION POR INFORME ABRIL 2006

LOMO CARDON PLAN PARCIAL DEL SUSNO I-3
 PROMOTOR: PROMOVICAN
 SITUACION: LOMO CARDON -T.M. DE INGENIO-

PLANO: No 13
 RED VIARIA - PERFILES
 ESCALA: 1/1000
 FECHA: ABRIL 2005
 ARQUITECTO: ESTEBAN ARGARATE MUÑOZ - INGENIERO T.O.P.: FERNANDO SOCORRO DIAZ